

ALUMINUM BROCHURE EUROCRAFT INDUSTRIES

Eurocraft Industries incl Allrightsreseved© Copyright 2022



ABOUT US



At Eurocraft Industries, we proudly bring over 30 years of industry experience to the table. Our journey began with a specialization in premium German UPVC products, establishing ourselves as a trusted leader known for our unwavering commitment to excellence. Under the visionary leadership of Mujica, we evolved to introduce a line of high-impact aluminum products, while never compromising on our core values of superior craftsmanship, reliability, and innovative design. Our mission is to provide exceptional solutions tailored to the unique needs of our clients, consistently setting new industry benchmarks. Discover how Eurocraft Industries continues to redefine excellence in impact-resistant doors and windows.



INDEX

EC-100 Fixed Window & shapes

PAGE 1 & 2

EC-200 Single Hung

PAGE 3

EC-300 Horizontal Slider

PAGE 4

EC-500 StoreFront

PAGE 5

EC-700 CASEMENT

PAGE 6

EC-450 SGD

PAGE 7

EC-400 SGD

PAGE 8

EC-600 Commercial FD

PAGE 9

EC-650 Residential FD

PAGE 10

STANDARD FINISHES

PAGE 11

WINDOWS





SERIES

EC100

Fixed window & Shapes

DESCRIPTION

- (LMI/SMI) missile impact rated
- Max Design loads (+/-120) (+/-140) psf
- Frame depth 3"
- Frame types: flange/flush with aluminum equal leg adapter
- Concealed mullion for mixed windows (No clip required)
- Stainless steel assembly screws to avoid future corrosion
- High performance low-e coating available
- Sea Turtle Protection Code glass available
- Privacy glass available

GLASS TYPES

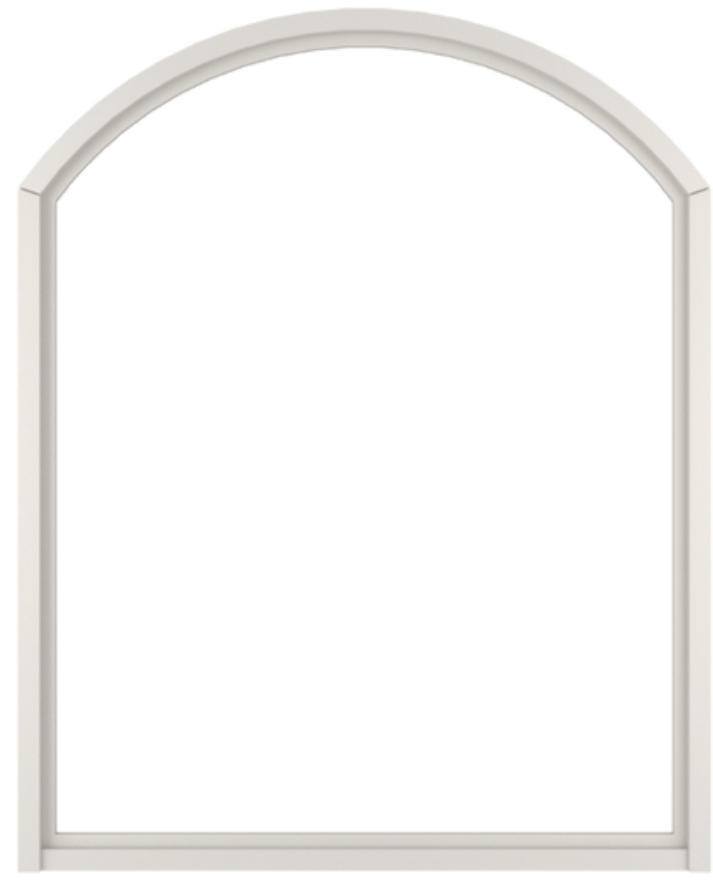
- Laminated 7/16"
- Laminated 9/16"
- Laminated Insulated 1-1/16"

MAX SIZE:

- 50"x 120"

FL # FL30977-R4





ARCH TOP FIXED



ARCH FIXED



HALF ARCH FIXED L/R



TRAPEZOID L/R



TOMBSTONE FIXED



CIRCLE FIXED



HALF CIRCLE FIXED



**HALF TOMBSTONE
FIXED L \ R**

SERIES

EC200

Single Hung

DESCRIPTION

- (LMI/SMI) missile impact rated
- Max Design loads (+/-120) (+/-140) psf
- Frame depth 3"
- Concealed mullion for mixed windows (No clip required)
- Stainless steel assembly screws to avoid future corrosion
- High performance low-e coating
- Sea Turtle Protection Code glass available
- Privacy glass available

FL # FL31550-R3



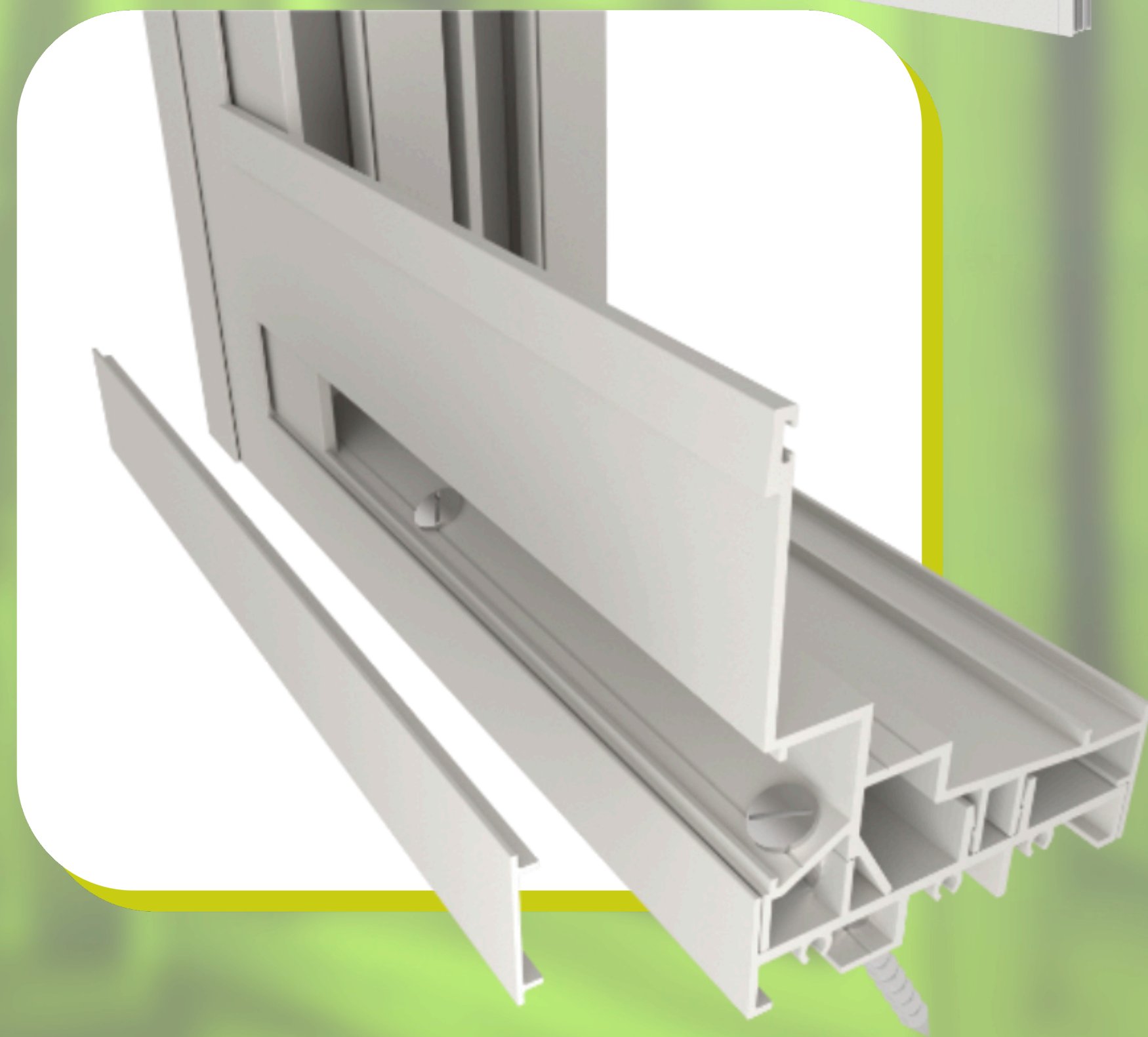
GLASS TYPES

- Laminated 7/16"
- Laminated 9/16"
- Laminated Insulated 1-1/16"

MAX SIZE:

- 53" x 96"/36" x 120"





SERIES

EC300

Horizontal Slider

DESCRIPTION

- (LMI/SMI) missile impact rated
- Max Design loads (+/-120) (+/-140) psf
- Frame depth 3"
- Concealed mullion for mixed windows (No clip required)
- Stainless steel assembly screws to avoid future corrosion
- High performance low-e coating available
- Sea Turtle Protection Code glass available
- Privacy glass available

GLASS TYPES

- Laminated 7/16"
- Laminated 9/16"
- Laminated Insulated 1-1/16"

FL # FL31966-R3



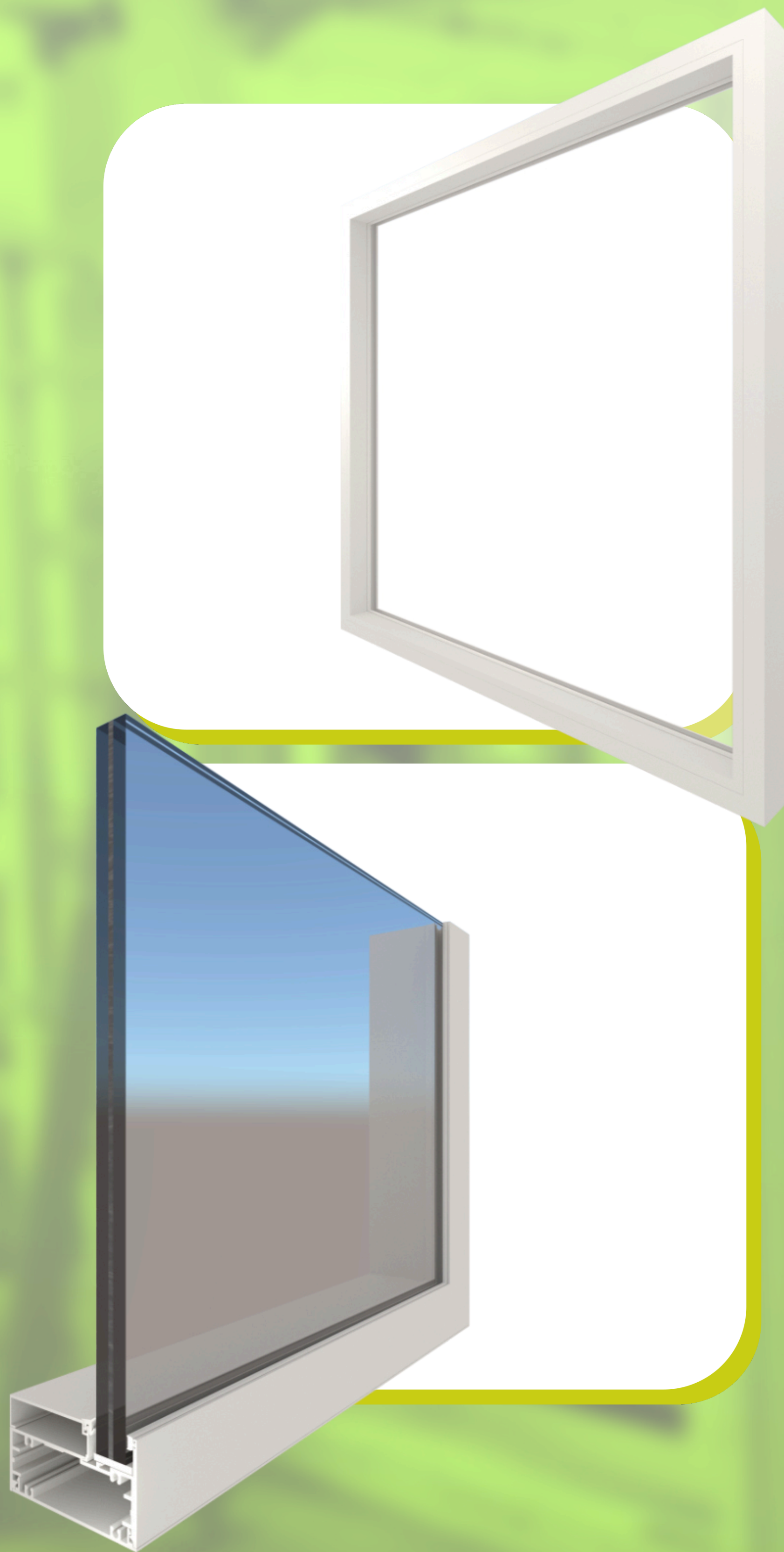
CONFIGURATIONS

- Two Panels: XO/OX (equal or unequal panels)
- Three panels : XOX 1/3-1/3-1/3 or 1/4-1/2-1/4

MAX SIZES

- Two Panels: 120" x 48"/80" x 76"
- Three panels: 144" x 60"/120" x 76"





SERIES

EC500

Storefront

DESCRIPTION

- (LMI/SMI) missile impact rated
- Max Design loads (+/-120) (+/-140) psf
- Frame depth 5"
- Front set glazing design
- Factory pre-assembled and pre-glazing system.
- Stainless steel assembly screws to avoid future corrosion
- High performance low-e coating available
- Sea Turtle Protection Code glass available
- Privacy glass available

FL # FL30945-R3



GLASS TYPES

- Laminated 9/16"
- Laminated Insulated 1-3/16"

MAX SIZE PANEL

- 60" x 144"





SERIES

EC700

CASEMENT

DESCRIPTION

- (LMI/SMI) missile impact rated.
- Design loads (+/-80) (+100/-120) psf
- Single arm operator and multi-point lock.
- Operable & Push out for egress function.
- Concealed mullion adapter (No clip required)
- Stainless steel assembly screws to avoid future corrosion.
- High performance low-e coating available.
- Sea Turtle Protection Code glass available.
- Privacy glass available.

GLASS TYPES

- Laminated 7/16"
- Laminated 9/16"
- Laminated Insulated 1-1/16"

MAX SIZE:

- Casement: 42" x 80"
- Awning: 80" x 42"

IN PROGRESS



DOORS





SERIES

EC400

CASEMENT

DESCRIPTION

- (LMI/SMI) missile impact rated
- Design loads (+/-120) (+/-140)
- Stainless steel assembly screws to avoid future corrosion
- Multitrack system (check FA for configurations)
- High performance low-e coating available
- Sea Turtle Protection Code glass available
- Privacy glass available

FL # FL43777-R1



GLASS TYPES

- Laminated 7/16"
- Laminated 9/16"
- Laminated Insulated 1-1/8"
- Laminated Insulated 1-3/16"

MAX SIZE PANEL:

- Max size Panel: 48" x 120"





SERIES

EC450

DESCRIPTION

- (LMI/SMI) missile impact rated
- Interlock reinforced for higher panels
- Design loads (+/-120)
- Stainless steel assembly screws to avoid future corrosion
- Multitrack system (check FA for configurations)
- High performance low-e coating available
- Sea Turtle Protection Code glass available
- Privacy glass available

FL # FL43777-R1



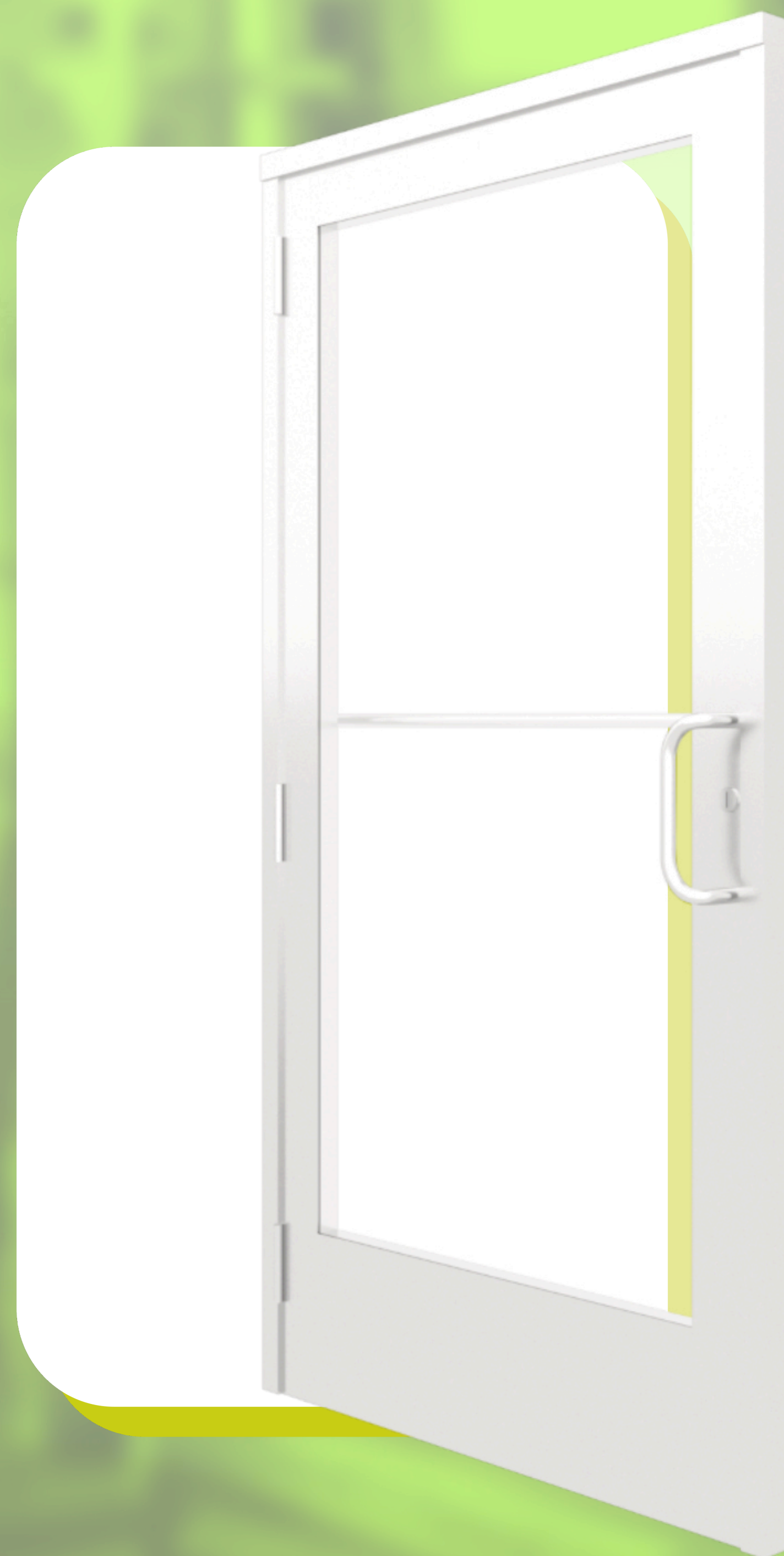
GLASS TYPES

- Laminated 7/16"
- Laminated 9/16"
- Laminated Insulated 1-1/8"
- Laminated Insulated 1-3/16"

MAX SIZE PANEL:

- Max size Panel: 48" x 144"





SERIES

EC600

Commercial French Door

DESCRIPTION

- (LMI/SMI) missile impact rated
- Design loads (+/-120) psf
- Frame depth 5"
- 1/2" / 2" ADA Threshold options
- Bottom rail: 8" / 10" ADA options
- High performance low-e coating available
- Sea Turtle Protection Code glass available
- Privacy glass available

FL # FL38771-R2



GLASS TYPES

- Laminated 9/16"
- Laminated Insulated 1-3/16"

MAX SIZE PANEL:

- 48"x120"
- 48"x156" (with transom)





SERIES

EC650

DESCRIPTION

- (LMI/SMI) missile impact rated
- Design loads (+/-100)
- Frame depth 5"
- Out-swing
- 1 1/4" / 2" ADA Threshold options
- Bottom rail 4.5" / 8" ADA options
- Stainless steel assembly screws to avoid future corrosion
- High performance low-e coating available
- Sea Turtle Protection Code glass available
- Privacy glass available
- Custom design available

FL # FL39881-R2



GLASS TYPES

- Laminated 7/16"
- Laminated 9/16"
- Laminated Insulated 1-1/16"

MAX SIZE PANEL:

- 42"x108"
- 42"x144" (with transom)



STANDARD FINISHES

AVAILABLE GLASS COLORS



CLEAR



BRONZE



GRAY



GREEN

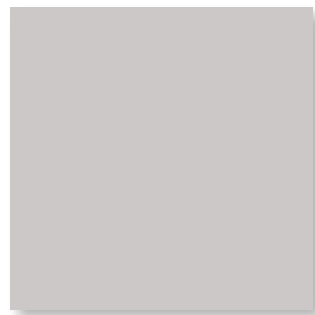


WHITEINTERLAYER
(PRIVACY)

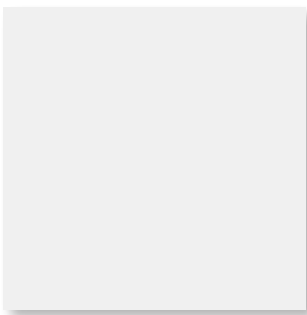
AVAILABLE FRAME COLORS



BRONZE



CLEAR ANODIZED



WHITE



We are committed to showing mutual respect and appreciation for all our employees, regardless of race, color, culture, or gender. This allows every employee to reach their full potential, helping us exceed our customers expectations.

CEO Biography



Yuxmiell Mujica

Yuxmiell Mujica is a charismatic, driven United States business owner based in Miami, FL. Founder and President of Eurocraft Industries, Ocean Doors and Windows and Mujica's Railing and Fence, Yuxmiell is a Cuban born immigrant who built his reputation and performance by satisfying and supporting the need of each individual client with absolute courtesy and expertise..

For over 16 years Yuxmiell has been a noteworthy leader in the Impact Windows and Doors and Powder Coating space. You may know him from his work centered around the manufacturing and distribution of construction, such as, impact windows, doors, storefronts and aluminum fixtures. Catering both commercial and residential products. His passion is to provide the highest quality services, offering the best available product.

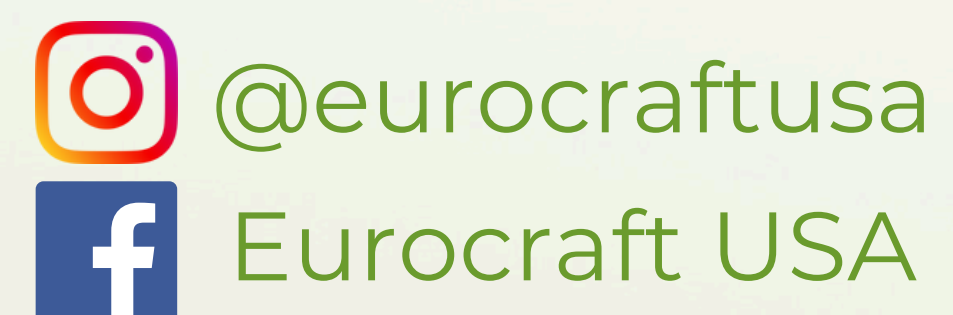




9251 NW 112TH Ave.
Medley, FL 33178
PH: 305-713-1871
Email: info@eurocraft-usa.com
Web: www.eurocraft-usa.com



Designed in Germany.
Built in the USA.



@eurocraftusa

Eurocraft USA