

EUROCRAFT INDUSTRIES INC.

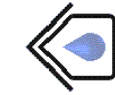
EQUAL-LEG MULLION (WZ3)(IMPACT)



7905 NW 77TH AVE
MEDLEY, FL 33166
PH: (305) 713-1871 FX: (305) 713-1872

TITLE: EQUAL LEG MULLION (WZ3)(IMPACT)
GENERAL NOTES & INSTRUCTIONS

PREPARED BY: BUILDING DROPS, INC.
398 E. DANIA BEACH BLVD., STE. 338
DANIA BEACH, FL 33004
PH: (954) 399-8478
FAX: (954) 744-4738
WEB: www.buildingdrops.com



GENERAL NOTES:

1. THE PRODUCT SHOWN HEREIN HAS BEEN EVALUATED PER AAMA/WDMA/CSA 101/I.S.2/A440-11, TAS 201-94, TAS 202-94, TAS 203-94, ASTM E1886-13, ASTM E1996-14, AND IS DESIGNED AND MANUFACTURED TO COMPLY WITH THE CURRENT EDITION OF THE FLORIDA BUILDING CODE EXCLUDING HVHZ.
2. APPROVED IMPACT PROTECTIVE SYSTEM **IS NOT REQUIRED** FOR THIS PRODUCT IN WIND BORNE DEBRIS REGIONS IN WIND ZONE 3 OR LESS. ADJOINING WINDOW AND DOORS SHALL BE EQUALLY RATED OR PROVIDED WITH AN IMPACT RESISTANT COVERING.
3. APPROVED IMPACT PROTECTIVE SYSTEM **IS REQUIRED** FOR THIS PRODUCT IN WIND BORNE DEBRIS REGIONS IN WIND ZONE 4.
4. MULLION IS ONLY VALID WHEN USED IN CONJUNCTION WITH APPLICABLE EUROCAST PRODUCTS
5. ADEQUACY OF THE EXISTING STRUCTURAL CONCRETE/MASONRY AND 2X FRAMING AS A MAIN WIND FORCE RESISTING SYSTEM CAPABLE OF WITHSTANDING AND TRANSFERRING APPLIED PRODUCT LOADS TO THE FOUNDATION IS THE RESPONSIBILITY OF THE ENGINEER OR ARCHITECT OF RECORD FOR THE PROJECT OF INSTALLATION.
6. 1X AND 2X BUCKS (WHEN USED) SHALL BE DESIGNED AND ANCHORED TO PROPERLY TRANSFER ALL LOADS TO THE STRUCTURE. BUCK DESIGN AND INSTALLATION IS THE RESPONSIBILITY OF THE ENGINEER OR ARCHITECT OF RECORD FOR THE PROJECT OF INSTALLATION.
7. THE INSTALLATION DETAILS DESCRIBED HEREIN ARE GENERIC AND MAY NOT REFLECT ACTUAL CONDITIONS FOR A SPECIFIC SITE. IF SITE CONDITIONS CAUSE INSTALLATION TO DEVIATE FROM THE REQUIREMENTS DETAILED HEREIN, A LICENSED ENGINEER OR ARCHITECT SHALL PREPARE SITE SPECIFIC DOCUMENTS FOR USE WITH THIS DOCUMENT IN NON-HVHZ AREAS.
8. MULLION MATERIAL: ALUMINUM 6063-T5
9. REINFORCEMENT: STEEL
10. SEE SHEETS 4-12 FOR INSTALLATION ANCHOR REQUIREMENTS, MULLION CONFIGURATIONS, AND DESIGN LOAD CAPACITIES.

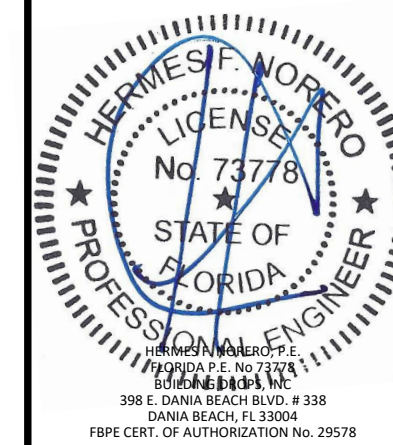
TABLE OF CONTENTS		
SHEET	REVISION	SHEET DESCRIPTION
1	-	GENERAL NOTES & INSTRUCTIONS
2	-	TYPICAL ELEVATIONS
3	-	VERTICAL AND HORIZONTAL SECTIONS
4	-	ANCHOR SCHEDULE AND COMPONENTS
5	-	ONE WAY CONFIGURATIONS (WITHOUT REINFORCEMENT)
6	-	ONE WAY CONFIGURATIONS (WITHOUT REINFORCEMENT)
7	-	TWO WAY CONFIGURATIONS (WITHOUT REINFORCEMENT)
8	-	TWO WAY CONFIGURATIONS (WITHOUT REINFORCEMENT)
9	-	ONE WAY CONFIGURATIONS (WITH REINFORCEMENT)
10	-	ONE WAY CONFIGURATIONS (WITH REINFORCEMENT)
11	-	TWO WAY CONFIGURATIONS (WITH REINFORCEMENT)
12	-	TWO WAY CONFIGURATIONS (WITH REINFORCEMENT)
13	-	MULLION ASSEMBLIES

INSTRUCTIONS:

1. DETERMINE REQUIRED DESIGN PRESSURE FOR OPENING.
2. CHOOSE A MULLION THAT PROPERLY FITS THE FENESTRATION PRODUCT.
3. DETERMINE WHETHER ASSEMBLY REQUIRES ONE-WAY OR TWO-WAY MULLIONS:
 - ASSEMBLIES CONSISTING OF STACKED OR SIDE-BY-SIDE UNITS REQUIRE USE OF ONE-WAY MULLIONS.
 - ASSEMBLIES CONSISTING OF MULTIPLE UNITS MULLED TOGETHER WITH MULTIPLE MULLIONS REQUIRE USE OF TWO-WAY MULLIONS.
 - SEE SHEET 13 FOR ASSEMBLY AND LOAD EXAMPLES.
 - IF ASSEMBLY TYPE CANNOT BE DETERMINED USE TWO-WAY MULLION CHART.
4. VERIFY THAT MULLION DESIGN PRESSURE MEETS OR EXCEEDS REQUIRED DESIGN PRESSURE OF OPENING USING CHARTS ON SHEETS 5-12.
5. MULTIPLE ANCHOR TYPE/SUBSTRATE/COMBINATIONS WITHIN AN OPENING ARE ALLOWED.
6. THE LESSER DESIGN PRESSURE FOR MULLION OR FENESTRATION PRODUCT WILL GOVERN OVERALL ASSEMBLY DESIGN PRESSURE RATING.

REMARKS	BY	DATE

THE INSTALLATION DETAILS DESCRIBED HEREIN ARE GENERIC AND MAY NOT REFLECT ACTUAL CONDITIONS FOR A SPECIFIC SITE. IF SITE CONDITIONS CAUSE INSTALLATION TO DEVIATE FROM THE REQUIREMENTS DETAILED HEREIN, A LICENSED ENGINEER OR ARCHITECT SHALL PREPARE SITE SPECIFIC DOCUMENTS FOR USE WITH THIS DOCUMENT.



FL#: **FL32630**

DATE: **06.11.2020**

DWG. BY: YC	CHK. BY: HFN
-----------------------	------------------------

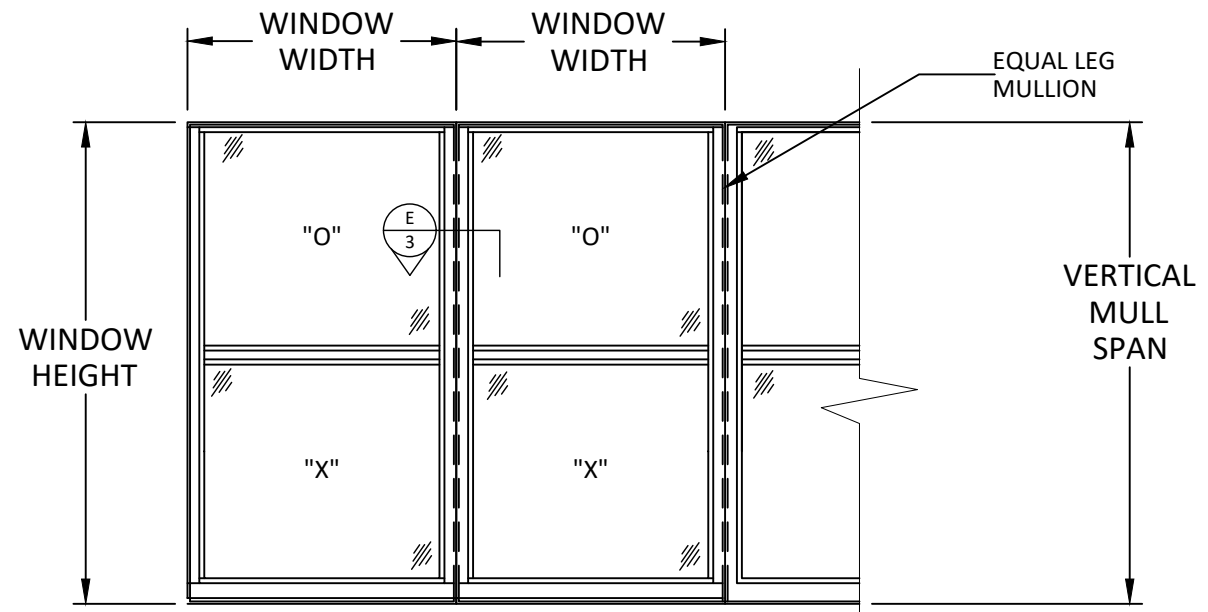
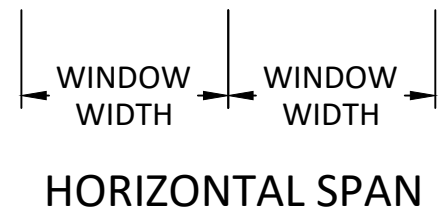
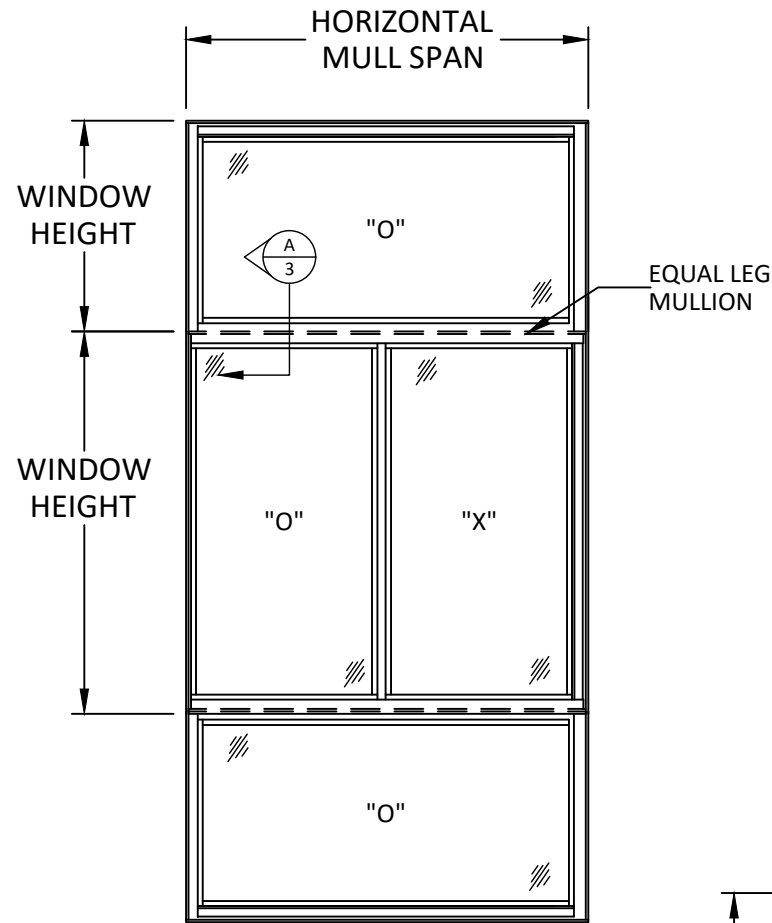
SCALE: **NTS**

DWG. #: **ECI028**

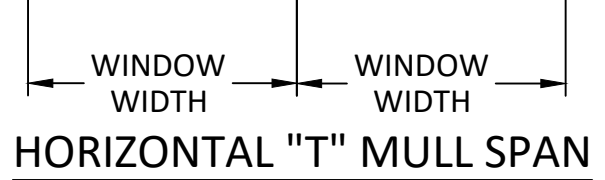
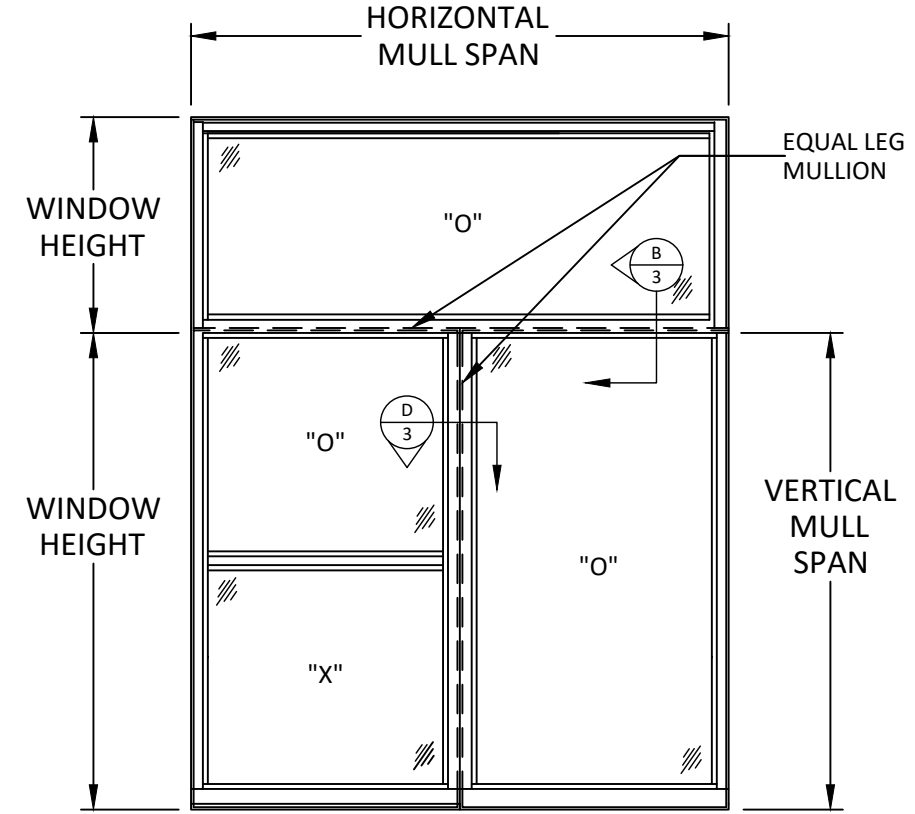
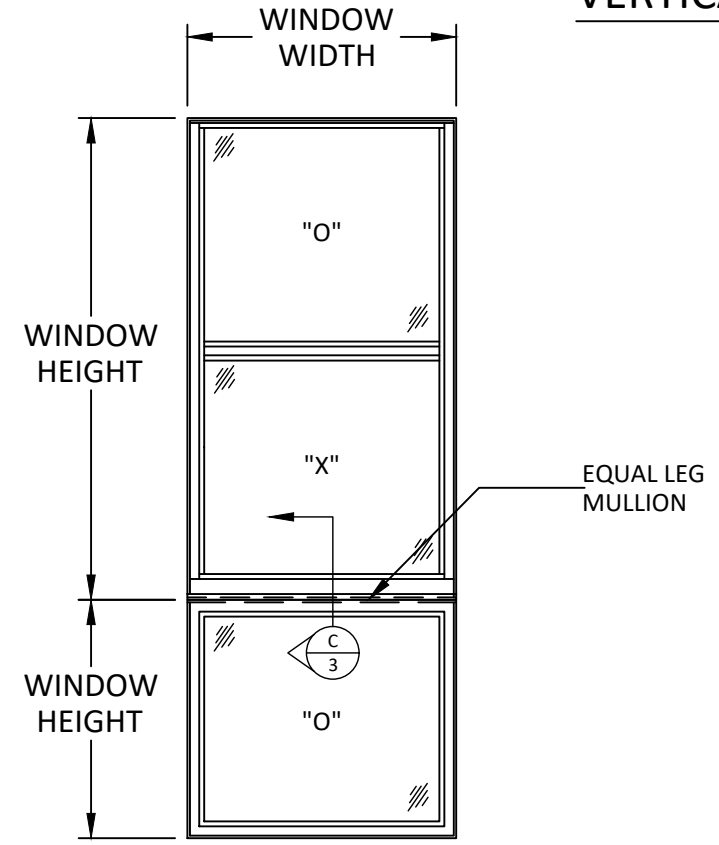
SHEET:
1
OF 13

12/17/2020 11:40 AM

TYPICAL ELEVATIONS



VERTICAL SPAN



Eurocraft

7905 NW 77TH AVE
MEDLEY, FL 33166
PH: (305) 713-1871 FX: (305) 713-1872

TITLE: EQUAL LEG MULLION (WZ3)(IMPACT)
TYPICAL ELEVATIONS

PREPARED BY: BUILDING DROPS, INC.
398 E. DANIA BEACH BLVD., STE. 338
DANIA BEACH, FL 33004
PH: (954) 399-8478
FAX: (954) 744-4738
WEB: www.buildingdrops.com

REMARKS	BY	DATE

THE INSTALLATION DETAILS DESCRIBED HEREIN ARE GENERIC AND MAY NOT REFLECT ACTUAL CONDITIONS FOR A SPECIFIC SITE. IF SITE CONDITIONS CAUSE INSTALLATION TO DEVIATE FROM THE REQUIREMENTS DETAILED HEREIN, A LICENSED ENGINEER OR ARCHITECT SHALL PREPARE SITE SPECIFIC DOCUMENTS FOR USE WITH THIS DOCUMENT.

HERMES J. MORERO, P.E.
FLORIDA P.E. No. 73778
BUILDING DROPS, INC.
398 E. DANIA BEACH BLVD. # 338
DANIA BEACH, FL 33004
FBPE CERT. OF AUTHORIZATION No. 29578

FL#: **FL32630**

DATE: **06.11.2020**

DWG. BY: **YC** CHK. BY: **HFN**

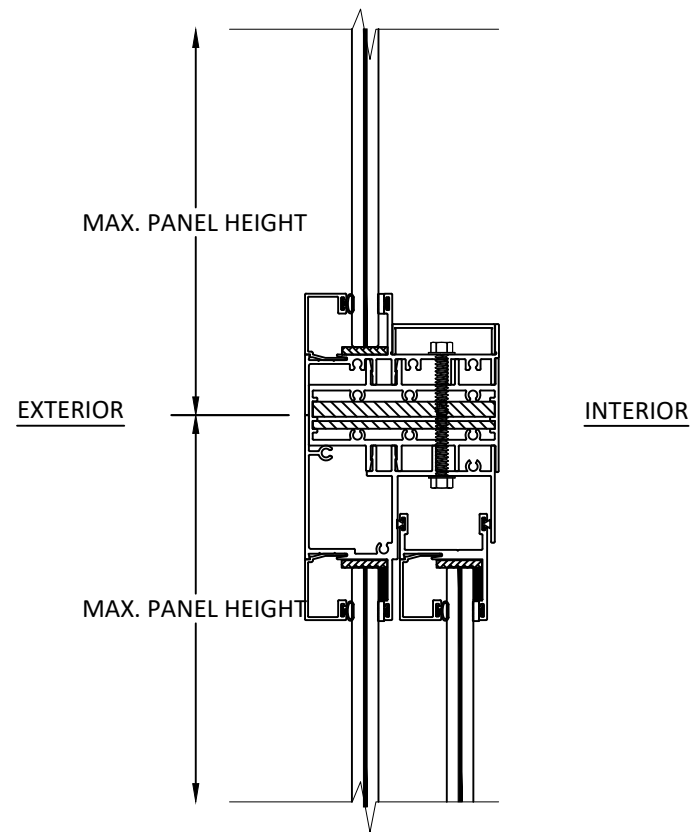
SCALE: **NTS**

DWG. #: **ECI028**

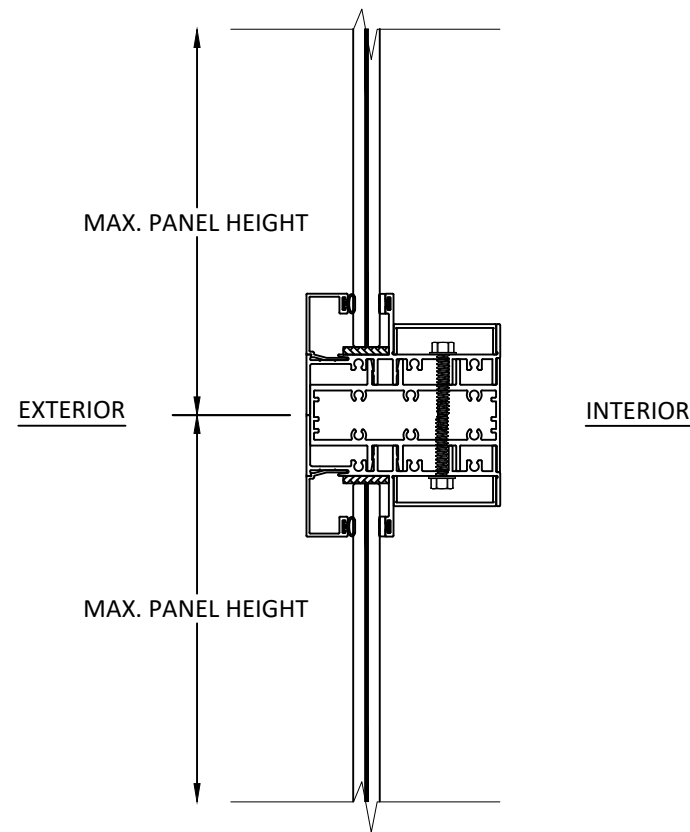
SHEET: **2**
OF 13

s:\projects\eurocraft_industries inc\cc-20-0916-fbc code change (ver. 7)\revision due to alum. anchors\132630.dwg\ec1028-wz3.dwg

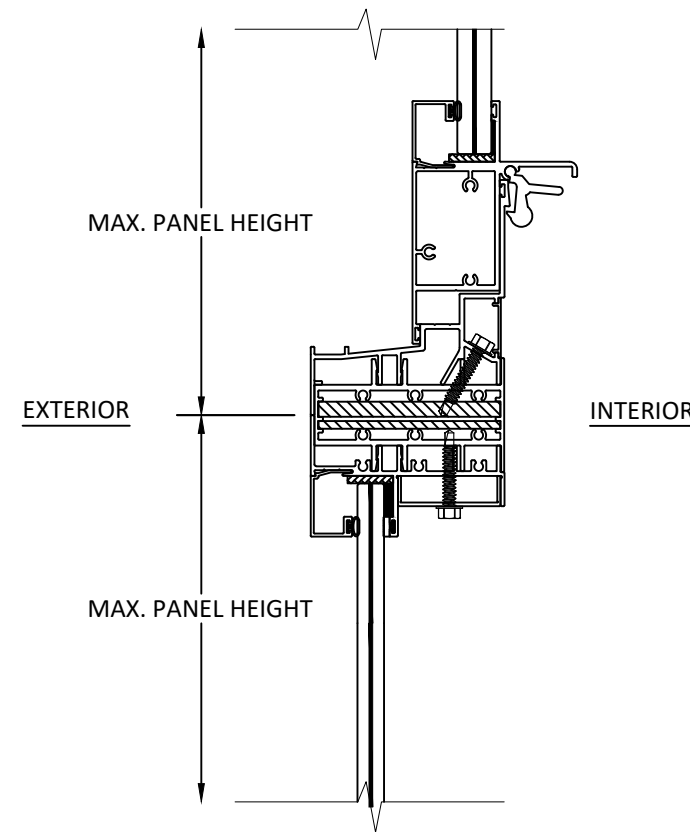
12/17/2020 11:40 AM



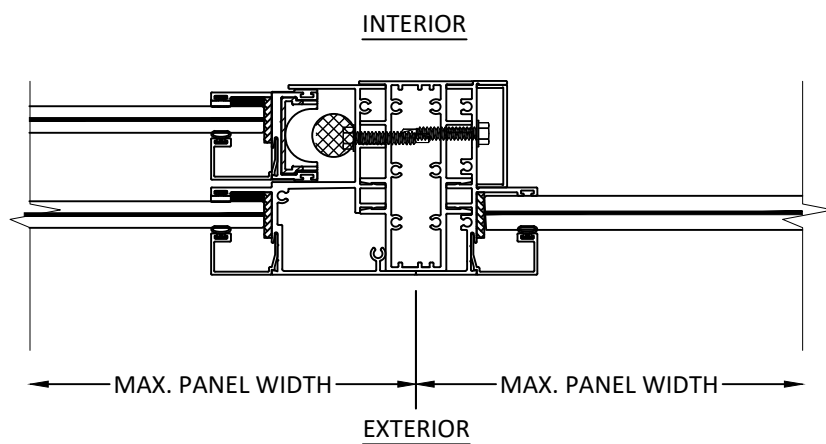
A
3 VERTICAL SECTION
EQUAL LEG WITH REINFORCEMENT



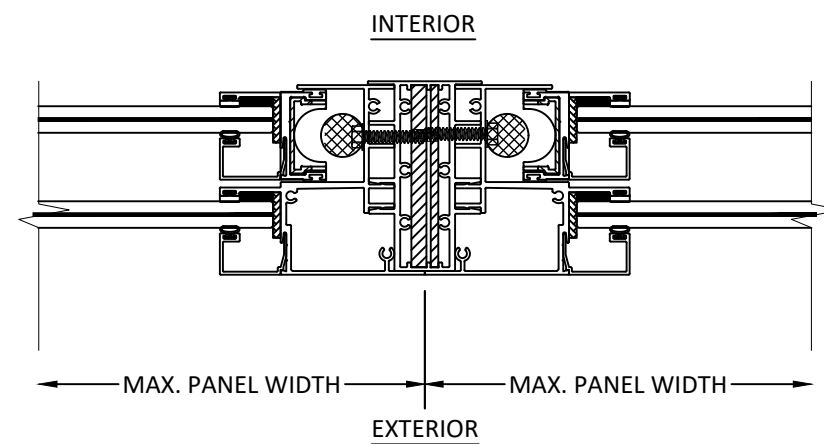
B
3 VERTICAL SECTION
EQUAL LEG WITHOUT REINFORCEMENT



C
3 VERTICAL SECTION
EQUAL LEG WITH REINFORCEMENT



D
3 HORIZONTAL SECTION
EQUAL LEG WITHOUT REINFORCEMENT



E
3 HORIZONTAL SECTION
EQUAL LEG WITH REINFORCEMENT



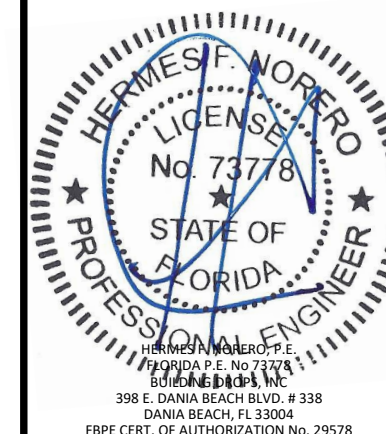
7905 NW 77TH AVE
MEDLEY, FL 33166
PH: (305) 713-1871 FX: (305) 713-1872

TITLE: EQUAL LEG MULLION (WZ3)(IMPACT)
VERTICAL AND HORIZONTAL SECTIONS

PREPARED BY: BUILDING DROPS, INC.
398 E. DANIA BEACH BLVD., STE. 338
DANIA BEACH, FL 33004
PH: (954) 359-8478
FAX: (954) 744-4738
WEB: www.buildingdrops.com

REMARKS	BY	DATE

THE INSTALLATION DETAILS DESCRIBED HEREIN ARE GENERIC AND MAY NOT REFLECT ACTUAL CONDITIONS FOR A SPECIFIC SITE. IF SITE CONDITIONS CAUSE INSTALLATION TO DEVIATE FROM THE REQUIREMENTS DETAILED HEREIN, A LICENSED ENGINEER OR ARCHITECT SHALL PREPARE SITE SPECIFIC DOCUMENTS FOR USE WITH THIS DOCUMENT.



FL#: FL32630

DATE: 06.11.2020

DWG. BY: YC
CHK. BY: HFN

SCALE: NTS

DWG. #: ECI028

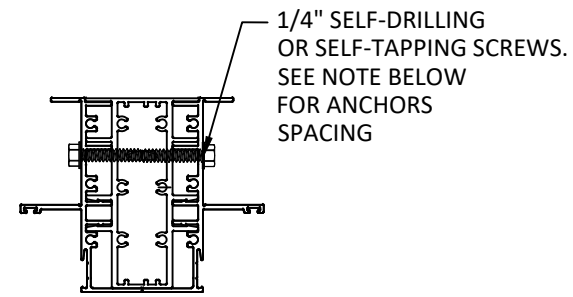
SHEET:

3

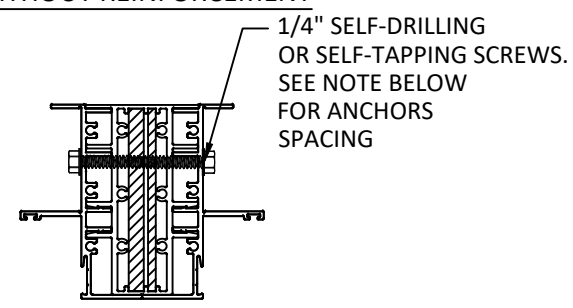
OF 13

s:\projects\eurocraft_industries inc\c-20-0916-fbc code change (ver. 7)\revision due to alum. anchors\132630.dwg\ec1028-wz3.dwg

12/17/2020 11:40 AM
 s:\projects\eurocraft_industries inc\cc-20-0916-fbc code change (ver. 7)\revision due to alum. anchors\132630.dwg\ec1028-wz3.dwg

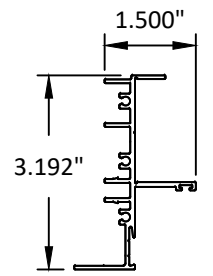


EQUAL LEG MULLION WITHOUT REINFORCEMENT

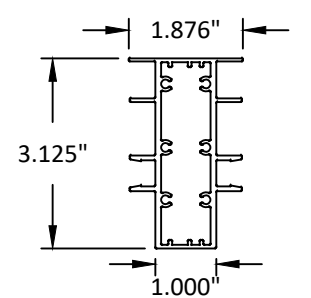


EQUAL LEG MULLION REINFORCEMENT

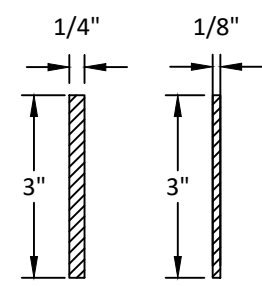
*ANCHOR SPACING IS DICTATED BY ANCHOR LAYOUT OF UNITS ATTACHING TO THE MULLION. SEE SEPARATE PRODUCT APPROVAL FOR DETAILS



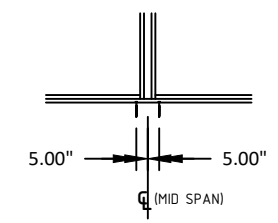
EQUAL LEG



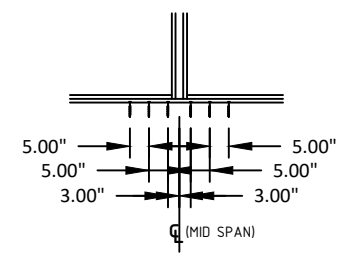
EQUAL LEG ADAPTER



A-36 STEEL REINFORCEMENT

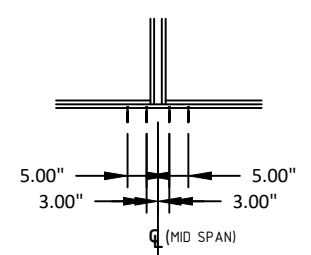


ANCHOR LAYOUT A1, B1, C1, D1

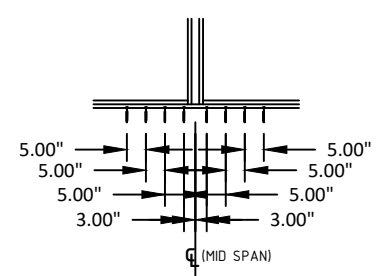


ANCHOR LAYOUT A3, B3, C3, D3

* ANCHORS INSTALLED THROUGH FRAME. MULLION DOES NOT REQUIRE INSTALLATION CLIP

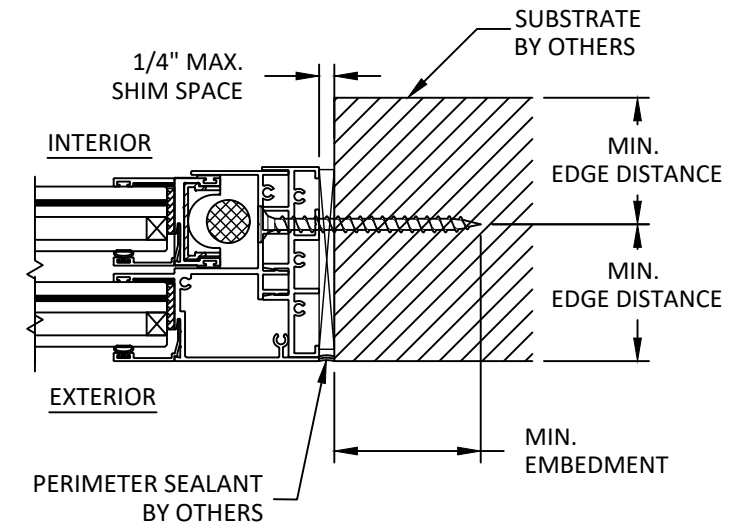


ANCHOR LAYOUT A2, B2, C2, D2



ANCHOR LAYOUT A4, B4, C4, D4

* ANCHORS INSTALLED THROUGH FRAME. MULLION DOES NOT REQUIRE INSTALLATION CLIP



A
4

HORIZONTAL SECTION THROUGH FRAME (JAMB) - WITH EQUAL LEG

HEAD AND SILL SIMILAR

ANCHOR SCHEDULE					
METHOD	ANCHOR TYPE	SUBSTRATE	ANCHOR SCHEDULE	MIN. EMBEDMENT	MIN. EDGE DISTANCE
THROUGH FRAME	A	WOOD: MIN. SG = 0.55	1/4" ITW TAPCON	2.50"	1.00"
	B	CONCRETE: MIN. F'c = 3000 PSI	1/4" ITW TAPCON	1.75"	2.50"
	C	METAL: 18 GAUGE STEEL. MIN. FY = 33 KSI	1/4" TEK SCREW	3 THREADS MIN. PENETRATION BEYOND METAL	0.50"
		METAL: ALUMINUM MIN. THICKNESS 1/8". MIN. 6063-T5			
D	MASONRY: CMU PER ASTM C90 MIN. 2000 PSI	1/4" ITW TAPCON	1.00"	4.00"	

7905 NW 77TH AVE
 MEDLEY, FL 33166
 PH: (305) 713-1871 FX: (305) 713-1872

TITLE: EQUAL LEG MULLION (WZ3)(IMPACT)
ANCHOR LAYOUT & COMPONENTS
PREPARED BY: BUILDING DROPS, INC.
 398 E. DANIA BEACH BLVD., STE. 338
 DANIA BEACH, FL 33004
 PH: (954) 399-8478
 FAX: (954) 744-4738
 WEB: www.buildingdrops.com

REMARKS	BY	DATE

THE INSTALLATION DETAILS DESCRIBED HEREIN ARE GENERIC AND MAY NOT REFLECT ACTUAL CONDITIONS FOR A SPECIFIC SITE. IF SITE CONDITIONS CAUSE INSTALLATION TO DEVIATE FROM THE REQUIREMENTS DETAILED HEREIN, A LICENSED ENGINEER OR ARCHITECT SHALL PREPARE SITE SPECIFIC DOCUMENTS FOR USE WITH THIS DOCUMENT.

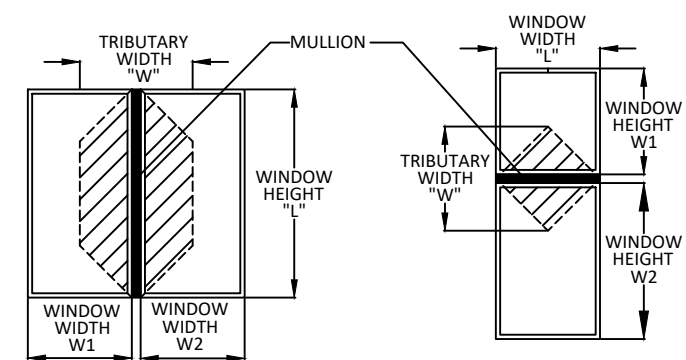
HERMES J. MORERO, P.E.
 LICENSE No. 73778
 STATE OF FLORIDA
 PROFESSIONAL ENGINEER
 398 E. DANIA BEACH BLVD. # 338
 DANIA BEACH, FL 33004
 FBPE CERT. OF AUTHORIZATION No. 29578

FL#: FL32630
DATE: 06.11.2020
DWG. BY: YC **CHK. BY:** HFN
SCALE: NTS
DWG. #: EC1028
SHEET:

12/17/2020 11:40 AM

**EQUAL LEG MULLION (WITHOUT REINFORCEMENT)
ONE WAY CONFIGURATION**

"W" TRIBUTARY WIDTH (IN)	"L" MULLION LENGTH (IN)	CONDITION 1				CONDITION 2				CONDITION 3				CONDITION 4			
		ANCHOR A	ANCHOR B	ANCHOR C	ANCHOR D	ANCHOR A	ANCHOR B	ANCHOR C	ANCHOR D	ANCHOR A	ANCHOR B	ANCHOR C	ANCHOR D	ANCHOR A	ANCHOR B	ANCHOR C	ANCHOR D
24	144	76	102	71	67	102	102	102	102	102	102	102	102	102	102	102	102
30		62	82	58	55	82	82	82	82	82	82	82	82	82	82	82	82
36		53	69	49	47	69	69	69	69	69	69	69	69	69	69	69	69
42		47	60	43	41	60	60	60	60	60	60	60	60	60	60	60	60
48		42	53	39	37	53	53	53	53	53	53	53	53	53	53	53	53
54		38	48	35	34	48	48	48	48	48	48	48	48	48	48	48	48
60		35	43	33	31	43	43	43	43	43	43	43	43	43	43	43	43
66		33	40	31	29	40	40	40	40	40	40	40	40	40	40	40	40
72		31	37	29	27	37	37	37	37	37	37	37	37	37	37	37	37
78		29	35	27	26	35	35	35	35	35	35	35	35	35	35	35	35
84		28	33	26	25	33	33	33	33	33	33	33	33	33	33	33	33
90		27	32	25	24	32	32	32	32	32	32	32	32	32	32	32	32
96	26	30	24	23	30	30	30	30	30	30	30	30	30	30	30	30	
24	138	80	116	74	70	116	116	116	116	116	116	116	116	116	116	116	116
30		65	94	61	58	94	94	94	94	94	94	94	94	94	94	94	94
36		56	79	52	49	79	79	79	79	79	79	79	79	79	79	79	79
42		49	68	46	43	68	68	68	68	68	68	68	68	68	68	68	68
48		44	60	41	39	60	60	60	60	60	60	60	60	60	60	60	60
54		40	54	37	36	54	54	54	54	54	54	54	54	54	54	54	54
60		37	50	35	33	50	50	50	50	50	50	50	50	50	50	50	50
66		35	46	32	31	46	46	46	46	46	46	46	46	46	46	46	46
72		33	43	31	29	43	43	43	43	43	43	43	43	43	43	43	43
78		31	40	29	28	40	40	40	40	40	40	40	40	40	40	40	40
84		30	38	28	26	38	38	38	38	38	38	38	38	38	38	38	38
90		29	37	27	25	37	37	37	37	37	37	37	37	37	37	37	37
96	28	35	26	25	35	35	35	35	35	35	35	35	35	35	35	35	
24	132	84	120	78	74	120	120	120	120	120	120	120	120	120	120	120	120
30		69	107	64	61	107	107	107	107	107	107	107	107	107	107	107	107
36		59	90	55	52	90	90	90	90	90	90	90	90	90	90	90	90
42		52	78	48	46	78	78	78	78	78	78	78	78	78	78	78	78
48		47	69	43	41	69	69	69	69	69	69	69	69	69	69	69	69
54		43	62	40	38	62	62	62	62	62	62	62	62	62	62	62	62
60		39	57	37	35	57	57	57	57	57	57	57	57	57	57	57	57
66		37	53	34	33	53	53	53	53	53	53	53	53	53	53	53	53
72		35	49	32	31	49	49	49	49	49	49	49	49	49	49	49	49
78		33	47	31	29	47	47	47	47	47	47	47	47	47	47	47	47
84		32	44	30	28	44	44	44	44	44	44	44	44	44	44	44	44
90		31	43	29	27	43	43	43	43	43	43	43	43	43	43	43	43
96	30	41	28	26	41	41	41	41	41	41	41	41	41	41	41	41	
24	126	88	120	82	78	120	120	120	120	120	120	120	120	120	120	120	120
30		73	120	67	64	120	120	120	120	120	120	120	120	120	120	120	120
36		62	104	58	55	104	104	104	104	104	104	104	104	104	104	104	104
42		55	90	51	48	90	90	90	90	90	90	90	90	90	90	90	90
48		49	80	46	44	80	80	80	80	80	80	80	80	80	80	80	80
54		45	72	42	40	72	72	72	72	72	72	72	72	72	72	72	72
60		42	66	39	37	66	66	66	66	66	66	66	66	66	66	66	66
66		39	61	37	35	61	61	61	61	61	61	61	61	61	61	61	61
72		37	58	35	33	58	58	58	58	58	58	58	58	58	58	58	58
78		36	54	33	31	54	54	54	54	54	54	54	54	54	54	54	54
84		34	52	32	30	52	52	52	52	52	52	52	52	52	52	52	52
90		33	50	31	29	50	50	50	50	50	50	50	50	50	50	50	50
96	32	48	30	28	48	48	48	48	48	48	48	48	48	48	48	48	
24	120	93	120	87	82	120	120	120	120	120	120	120	120	120	120	120	120
30		77	120	71	68	120	120	120	120	120	120	120	120	120	120	120	120
36		66	116	61	58	116	116	116	116	116	116	116	116	116	116	116	116
42		58	103	54	51	103	103	103	103	103	103	103	103	103	103	103	103
48		52	93	49	46	93	93	93	93	93	93	93	93	93	93	93	93
54		48	84	45	42	84	84	84	84	84	84	84	84	84	84	84	84
60		45	77	42	39	77	77	77	77	77	77	77	77	77	77	77	77
66		42	71	39	37	71	71	71	71	71	71	71	71	71	71	71	71
72		40	67	37	35	67	67	67	67	67	67	67	67	67	67	67	67
78		38	63	35	34	63	63	63	63	63	63	63	63	63	63	63	63
84		37	60	34	33	60	60	60	60	60	60	60	60	60	60	60	60
90		36	58	33	32	58	58	58	58	58	58	58	58	58	58	58	58
96	35	56	32	31	56	56	56	56	56	56	56	56	56	56	56	56	
24	114	99	120	92	87	120	120	120	120	120	120	120	120	120	120	120	120
30		81	120	76	72	120	120	120	120	120	120	120	120	120	120	120	120
36		70	120	65	62	120	120	120	120	120	120	120	120	120	120	120	120
42		62	109	57	55	109	109	109	109	109	109	109	109	109	109	109	109
48		56	99	52	49	99	99	99	99	99	99	99	99	99	99	99	99
54		51	91	48	45	91	91	91	91	91	91	91	91	91	91	91	91
60		48	85	44	42	85	85	85	85	85	85	85	85	85	85	85	85
66		45	80	42	40	80	80	80	80	80	80	80	80	80	80	80	80
72		43	75	40	38	75	75	75	75	75	75	75	75	75	75	75	75
78		41	71	38	36	71	71	71	71	71	71	71	71	71	71	71	71
84		40	68	37	35	68	68	68	68	68	68	68	68	68	68	68	68
90		39	66	36	34	66	66	66	66	66	66	66	66	66	66	66	66
96	38	64	35	34	64	64	64	64	64	64	64	64	64	64	64	64	

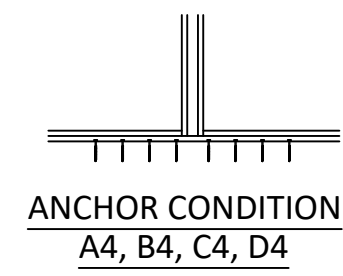
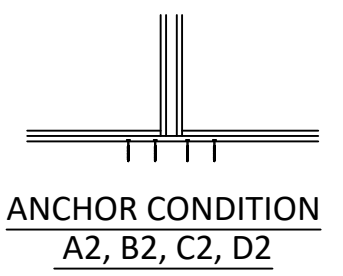
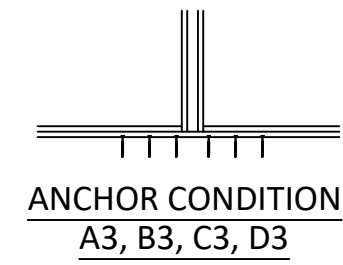
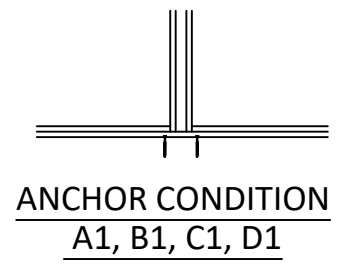


ONE-WAY MULLION DIAGRAMS

$$\text{TRIBUTARY WIDTH}(W) = \frac{W1 + W2}{2}$$

TABLE NOTES:

1. SEE SHEET 1 FOR INSTRUCTIONS ON USING TABLES.
2. LINEAR INTERPOLATION BETWEEN LISTED WIDTHS AND SPANS IS ALLOWED.
3. SEE THIS SHEET FOR SPECIFIC MULLION DIMENSIONS.
4. SEE SHEET 4 FOR MULLION AND REINFORCEMENT DETAILS.
5. SEE SHEET 4 FOR ANCHOR TYPES AND REQUIREMENTS.
6. SEE SHEET 4 FOR INSTALLATION SUBSTRATES DETAILS



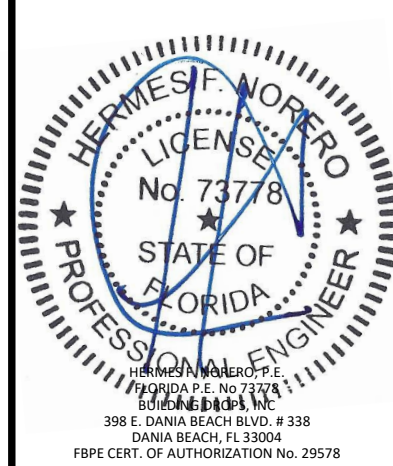
7905 NW 77TH AVE
MEDLEY, FL 33166
PH: (305) 713-1871 FX: (305) 713-1872

TITLE:
EQUAL LEG MULLION (WZ3)(IMPACT)
ONE-WAY CONFIGURATION (WITHOUT REINFORCEMENT)

PREPARED BY:
BUILDING DROPS, INC.
398 E. DANIA BEACH BLVD., STE. 338
DANIA BEACH, FL 33004
PH: (954) 399-8478
FAX: (954) 744-4738
WEB: www.buildingdrops.com

REMARKS	BY	DATE

THE INSTALLATION DETAILS DESCRIBED HEREIN ARE GENERIC AND MAY NOT REFLECT ACTUAL CONDITIONS FOR A SPECIFIC SITE. IF SITE CONDITIONS CAUSE INSTALLATION TO DEVIATE FROM THE REQUIREMENTS DETAILED HEREIN, A LICENSED ENGINEER OR ARCHITECT SHALL PREPARE SITE SPECIFIC DOCUMENTS FOR USE WITH THIS DOCUMENT.

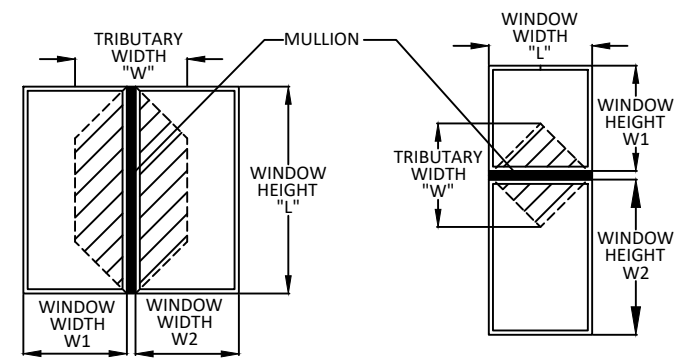


FL#: FL32630
DATE: 06.11.2020
DWG. BY: YC **CHK. BY:** HFN
SCALE: NTS
DWG. #: ECI028

12/17/2020 11:40 AM
s:\projects\eurocraft_industries\cc-20-0916-fbc code change (ver. 7)\revision due to alum. anchors\132630.dwg\eci028-wz3.dwg

**EQUAL LEG MULLION (WITHOUT REINFORCEMENT)
ONE WAY CONFIGURATION**

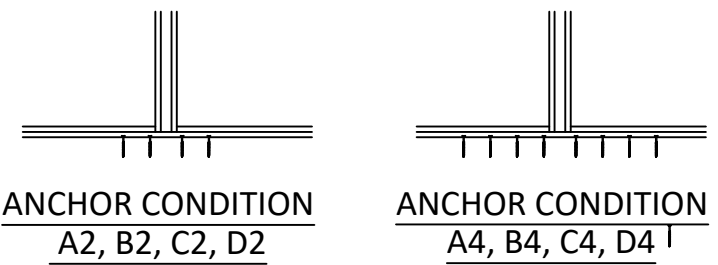
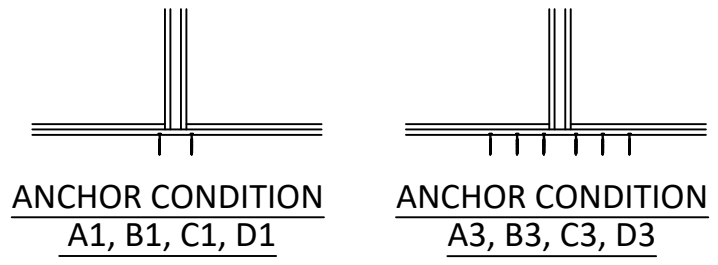
"W" TRIBUTARY WIDTH (IN)	"L" MULLION LENGTH (IN)	CONDITION 1				CONDITION 2				CONDITION 3				CONDITION 4			
		ANCHOR A	ANCHOR B	ANCHOR C	ANCHOR D	ANCHOR A	ANCHOR B	ANCHOR C	ANCHOR D	ANCHOR A	ANCHOR B	ANCHOR C	ANCHOR D	ANCHOR A	ANCHOR B	ANCHOR C	ANCHOR D
24	108	105	120	97	93	120	120	120	120	120	120	120	120	120	120	120	120
30		87	120	80	76	120	120	120	120	120	120	120	120	120	120	120	120
36		75	120	69	66	120	120	120	120	120	120	120	120	120	120	120	120
42		66	117	61	58	117	117	117	117	117	117	117	117	117	117	117	117
48		60	106	56	53	106	106	106	106	106	106	106	106	106	106	106	106
54		55	98	51	49	98	98	98	97	98	98	98	98	98	98	98	98
60		52	91	48	46	91	91	91	91	91	91	91	91	91	91	91	91
66		49	86	45	43	86	86	86	86	86	86	86	86	86	86	86	86
72		47	82	43	41	82	82	82	82	82	82	82	82	82	82	82	82
78		45	79	42	40	79	79	79	79	79	79	79	79	79	79	79	79
84		44	77	40	38	77	77	77	77	77	77	77	77	77	77	77	77
90		43	75	40	38	75	75	75	75	75	75	75	75	75	75	75	75
96		42	74	39	37	74	74	74	74	74	74	74	74	74	74	74	74
24		102	120	120	111	106	120	120	120	120	120	120	120	120	120	120	120
30			99	120	92	88	120	120	120	120	120	120	120	120	120	120	120
36			86	120	80	76	120	120	120	120	120	120	120	120	120	120	120
42	77		120	71	68	120	120	120	120	120	120	120	120	120	120	120	
48	70		120	65	62	120	120	120	120	120	120	120	120	120	120	120	
54	65		115	60	57	115	115	115	114	115	115	115	115	115	115	115	
60	61		108	57	54	108	108	108	108	108	108	108	108	108	108	108	
66	58		103	54	51	103	103	103	103	103	103	103	103	103	103	103	
72	56		99	52	49	99	99	99	99	99	99	99	99	99	99	99	
78	54		96	50	48	96	96	96	96	96	96	96	96	96	96	96	
84	53		94	49	47	94	94	94	94	94	94	94	94	94	94	94	
90	53		93	49	46	93	93	93	93	93	93	93	93	93	93	93	
96	52		93	49	46	93	93	93	93	93	93	93	93	93	93	93	
24	96		120	120	120	114	120	120	120	120	120	120	120	120	120	120	120
30			107	120	100	95	120	120	120	120	120	120	120	120	120	120	120
36			93	120	87	82	120	120	120	120	120	120	120	120	120	120	120
42		83	120	77	74	120	120	120	120	120	120	120	120	120	120	120	
48		76	120	71	67	120	120	120	120	120	120	120	120	120	120	120	
54		71	120	66	63	120	120	120	120	120	120	120	120	120	120	120	
60		67	119	62	59	119	119	119	118	119	119	119	119	119	119	119	
66		64	114	60	57	114	114	114	113	114	114	114	114	114	114	114	
72		62	110	58	55	110	110	110	110	110	110	110	110	110	110	110	
78		61	107	56	54	107	107	107	107	107	107	107	107	107	107	107	
84		60	106	56	53	106	106	106	106	106	106	106	106	106	106	106	
90		60	106	55	53	106	106	106	105	106	106	106	106	106	106	106	
96		52	98	49	46	105	106	97	93	106	106	106	106	106	106	106	
24		90	120	120	120	120	120	120	120	120	120	120	120	120	120	120	120
30			117	120	108	103	120	120	120	120	120	120	120	120	120	120	120
36			102	120	94	90	120	120	120	120	120	120	120	120	120	120	120
42	91		120	85	81	120	120	120	120	120	120	120	120	120	120	120	
48	84		120	78	74	120	120	120	120	120	120	120	120	120	120	120	
54	78		120	73	69	120	120	120	120	120	120	120	120	120	120	120	
60	75		120	69	66	120	120	120	120	120	120	120	120	120	120	120	
66	72		120	67	63	120	120	120	120	120	120	120	120	120	120	120	
72	70		120	65	62	120	120	120	120	120	120	120	120	120	120	120	
78	69		120	64	61	120	120	120	120	120	120	120	120	120	120	120	
84	68		120	64	60	120	120	120	120	120	120	120	120	120	120	120	
90	60		112	55	53	119	120	111	105	120	120	120	120	120	120	120	
96	52		98	49	46	105	118	97	93	118	118	118	118	118	118	118	
24	84		120	120	120	120	120	120	120	120	120	120	120	120	120	120	120
30			120	120	119	113	120	120	120	120	120	120	120	120	120	120	120
36			112	120	104	99	120	120	120	120	120	120	120	120	120	120	120
42		101	120	94	89	120	120	120	120	120	120	120	120	120	120	120	
48		93	120	87	82	120	120	120	120	120	120	120	120	120	120	120	
54		88	120	81	77	120	120	120	120	120	120	120	120	120	120	120	
60		84	120	78	74	120	120	120	120	120	120	120	120	120	120	120	
66		81	120	76	72	120	120	120	120	120	120	120	120	120	120	120	
72		80	120	74	70	120	120	120	120	120	120	120	120	120	120	120	
78		79	120	74	70	120	120	120	120	120	120	120	120	120	120	120	
84		68	120	64	60	120	120	120	120	120	120	120	120	120	120	120	
90		60	112	55	53	119	120	111	105	120	120	120	120	120	120	120	
96		52	98	49	46	105	120	97	93	120	120	120	120	120	120	120	
24		78	120	120	120	120	120	120	120	120	120	120	120	120	120	120	120
30			120	120	120	120	120	120	120	120	120	120	120	120	120	120	120
36			120	120	115	110	120	120	120	120	120	120	120	120	120	120	120
42	113		120	105	99	120	120	120	120	120	120	120	120	120	120	120	
48	105		120	97	93	120	120	120	120	120	120	120	120	120	120	120	
54	99		120	92	88	120	120	120	120	120	120	120	120	120	120	120	
60	96		120	89	85	120	120	120	120	120	120	120	120	120	120	120	
66	94		120	87	83	120	120	120	120	120	120	120	120	120	120	120	
72	93		120	87	82	120	120	120	120	120	120	120	120	120	120	120	
78	79		120	74	70	120	120	120	120	120	120	120	120	120	120	120	
84	68		120	64	60	120	120	120	120	120	120	120	120	120	120	120	
90	60		112	55	53	119	120	111	105	120	120	120	120	120	120	120	
96	52		98	49	46	105	120	97	93	120	120	120	120	120	120	120	



ONE-WAY MULLION DIAGRAMS

$$\text{TRIBUTARY WIDTH}(W) = \frac{W1 + W2}{2}$$

- TABLE NOTES:**
- SEE SHEET 1 FOR INSTRUCTIONS ON USING TABLES.
 - LINEAR INTERPOLATION BETWEEN LISTED WIDTHS AND SPANS IS ALLOWED.
 - SEE THIS SHEET FOR SPECIFIC MULLION DIMENSIONS.
 - SEE SHEET 4 FOR MULLION AND REINFORCEMENT DETAILS.
 - SEE SHEET 4 FOR ANCHOR TYPES AND REQUIREMENTS.
 - SEE SHEET 4 FOR INSTALLATION SUBSTRATES DETAILS



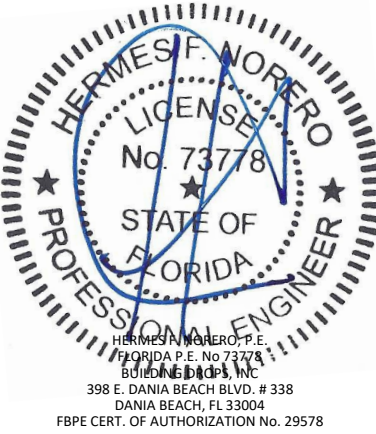
7905 NW 77TH AVE
MEDLEY, FL 33166
PH: (305) 713-1871 FX: (305) 713-1872

TITLE:
EQUAL LEG MULLION (WZ3)(IMPACT)
ONE-WAY CONFIGURATION (WITHOUT REINFORCEMENT)

PREPARED BY:
BUILDING DROPS, INC.
398 E. DANIA BEACH BLVD., STE. 338
DANIA BEACH, FL 33004
PH: (954) 359-8478
FAX: (954) 744-4738
WEB: www.buildingdrops.com

REMARKS	BY	DATE

THE INSTALLATION DETAILS DESCRIBED HEREIN ARE GENERIC AND MAY NOT REFLECT ACTUAL CONDITIONS FOR A SPECIFIC SITE. IF SITE CONDITIONS CAUSE INSTALLATION TO DEVIATE FROM THE REQUIREMENTS DETAILED HEREIN, A LICENSED ENGINEER OR ARCHITECT SHALL PREPARE SITE SPECIFIC DOCUMENTS FOR USE WITH THIS DOCUMENT.



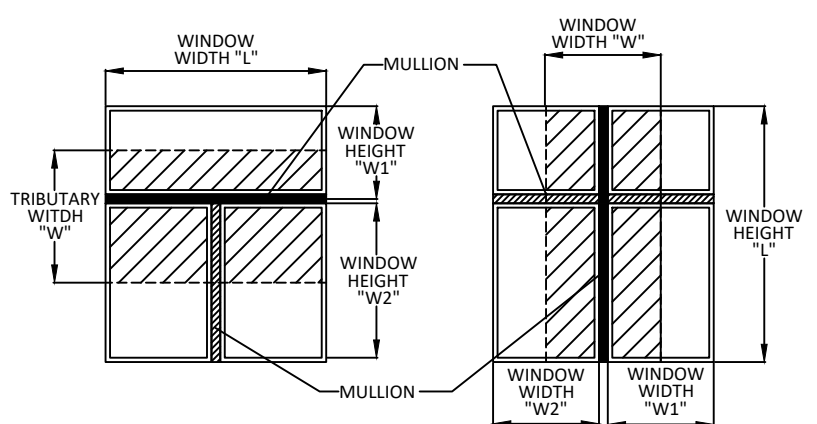
FL#:	FL32630
DATE:	06.11.2020
DWG. BY:	YC
CHK. BY:	HFN
SCALE:	NTS
DWG. #:	ECI028

SHEET:
6
OF 13

12/17/2020 11:40 AM
s:\projects\eurocraft_industries\inc\cc-20-0916-fbc code change (ver. 7)\revision due to alum. anchors\132630.dwg\ec1028-wz3.dwg

**EQUAL LEG MULLION (WITHOUT REINFORCEMENT)
TWO WAY CONFIGURATION**

"W" TRIBUTARY WIDTH (IN)	"L" MULLION LENGTH (IN)	CONDITION 1				CONDITION 2				CONDITION 3				CONDITION 4			
		ANCHOR A	ANCHOR B	ANCHOR C	ANCHOR D	ANCHOR A	ANCHOR B	ANCHOR C	ANCHOR D	ANCHOR A	ANCHOR B	ANCHOR C	ANCHOR D	ANCHOR A	ANCHOR B	ANCHOR C	ANCHOR D
24	144	70	94	65	62	94	94	94	94	94	94	94	94	94	94	94	94
30		56	74	52	49	74	74	74	74	74	74	74	74	74	74	74	74
36		47	60	43	41	60	60	60	60	60	60	60	60	60	60	60	60
42		40	51	37	35	51	51	51	51	51	51	51	51	51	51	51	51
48		35	44	32	31	44	44	44	44	44	44	44	44	44	44	44	44
54		31	39	29	27	39	39	39	39	39	39	39	39	39	39	39	39
60		28	34	26	25	34	34	34	34	34	34	34	34	34	34	34	34
66		25	31	24	22	31	31	31	31	31	31	31	31	31	31	31	31
72		23	28	22	21	28	28	28	28	28	28	28	28	28	28	28	28
78		22	26	20	19	26	26	26	26	26	26	26	26	26	26	26	26
84		20	24	19	18	24	24	24	24	24	24	24	24	24	24	24	24
90		19	22	17	16	22	22	22	22	22	22	22	22	22	22	22	22
96	17	20	16	15	20	20	20	20	20	20	20	20	20	20	20	20	
24	138	73	106	68	64	106	106	106	106	106	106	106	106	106	106	106	106
30		58	83	54	51	83	83	83	83	83	83	83	83	83	83	83	83
36		49	68	45	43	68	68	68	68	68	68	68	68	68	68	68	68
42		42	58	39	37	58	58	58	58	58	58	58	58	58	58	58	58
48		36	50	34	32	50	50	50	50	50	50	50	50	50	50	50	50
54		32	44	30	29	44	44	44	44	44	44	44	44	44	44	44	44
60		29	39	27	26	39	39	39	39	39	39	39	39	39	39	39	39
66		27	35	25	23	35	35	35	35	35	35	35	35	35	35	35	35
72		24	32	23	21	32	32	32	32	32	32	32	32	32	32	32	32
78		22	29	21	20	29	29	29	29	29	29	29	29	29	29	29	29
84		21	27	19	18	27	27	27	27	27	27	27	27	27	27	27	27
90		19	25	18	17	25	25	25	25	25	25	25	25	25	25	25	25
96	18	23	17	16	23	23	23	23	23	23	23	23	23	23	23	23	
24	132	76	120	71	67	120	120	120	120	120	120	120	120	120	120	120	120
30		61	95	57	54	95	95	95	95	95	95	95	95	95	95	95	95
36		51	78	47	45	78	78	78	78	78	78	78	78	78	78	78	78
42		44	66	40	38	66	66	66	66	66	66	66	66	66	66	66	66
48		38	57	35	34	57	57	57	57	57	57	57	57	57	57	57	57
54		34	50	31	30	50	50	50	50	50	50	50	50	50	50	50	50
60		30	44	28	27	44	44	44	44	44	44	44	44	44	44	44	44
66		28	40	26	24	40	40	40	40	40	40	40	40	40	40	40	40
72		25	36	24	22	36	36	36	36	36	36	36	36	36	36	36	36
78		23	33	22	21	33	33	33	33	33	33	33	33	33	33	33	33
84		22	30	20	19	30	30	30	30	30	30	30	30	30	30	30	30
90		20	28	19	18	28	28	28	28	28	28	28	28	28	28	28	28
96	19	26	18	17	26	26	26	26	26	26	26	26	26	26	26	26	
24	126	80	120	74	70	120	120	120	120	120	120	120	120	120	120	120	120
30		64	109	59	56	109	109	109	109	109	109	109	109	109	109	109	109
36		53	89	49	47	89	89	89	89	89	89	89	89	89	89	89	89
42		46	75	42	40	75	75	75	75	75	75	75	75	75	75	75	75
48		40	65	37	35	65	65	65	65	65	65	65	65	65	65	65	65
54		35	57	33	31	57	57	57	57	57	57	57	57	57	57	57	57
60		32	50	30	28	50	50	50	50	50	50	50	50	50	50	50	50
66		29	45	27	26	45	45	45	45	45	45	45	45	45	45	45	45
72		27	41	25	23	41	41	41	41	41	41	41	41	41	41	41	41
78		25	38	23	22	38	38	38	38	38	38	38	38	38	38	38	38
84		23	35	21	20	35	35	35	35	35	35	35	35	35	35	35	35
90		21	32	20	19	32	32	32	32	32	32	32	32	32	32	32	32
96	20	30	19	18	30	30	30	30	30	30	30	30	30	30	30	30	
24	120	84	120	78	74	120	120	120	120	120	120	120	120	120	120	120	120
30		67	119	62	59	119	119	119	119	119	119	119	119	119	119	119	119
36		56	99	52	49	99	99	99	99	99	99	99	99	99	99	99	99
42		48	85	44	42	85	85	85	85	85	85	85	85	85	85	85	85
48		42	74	39	37	74	74	74	74	74	74	74	74	74	74	74	74
54		37	65	35	33	65	65	65	65	65	65	65	65	65	65	65	65
60		34	58	31	30	58	58	58	58	58	58	58	58	58	58	58	58
66		30	52	28	27	52	52	52	52	52	52	52	52	52	52	52	52
72		28	47	26	25	47	47	47	47	47	47	47	47	47	47	47	47
78		26	43	24	23	43	43	43	43	43	43	43	43	43	43	43	43
84		24	39	22	21	39	39	39	39	39	39	39	39	39	39	39	39
90		22	36	21	20	36	36	36	36	36	36	36	36	36	36	36	36
96	21	34	19	19	34	34	34	34	34	34	34	34	34	34	34	34	
24	114	88	120	82	78	120	120	120	120	120	120	120	120	120	120	120	120
30		71	120	66	62	120	120	120	120	120	120	120	120	120	120	120	120
36		59	104	55	52	104	104	104	104	104	104	104	104	104	104	104	104
42		50	89	47	45	89	89	89	89	89	89	89	89	89	89	89	89
48		44	78	41	39	78	78	78	78	78	78	78	78	78	78	78	78
54		39	69	36	35	69	69	69	69	69	69	69	69	69	69	69	69
60		35	63	33	31	63	63	63	63	63	63	63	63	63	63	63	63
66		32	57	30	28	57	57	57	57	57	57	57	57	57	57	57	57
72		29	51	27	26	51	51	51	51	51	51	51	51	51	51	51	51
78		27	47	25	24	47	47	47	47	47	47	47	47	47	47	47	47
84		25	43	23	22	43	43	43	43	43	43	43	43	43	43	43	43
90		24	40	22	21	40	40	40	40	40	40	40	40	40	40	40	40
96	22	37	20	19	37	37	37	37	37	37	37	37	37	37	37	37	

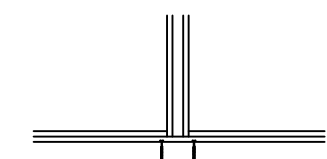


TWO-WAY MULLION DIAGRAMS

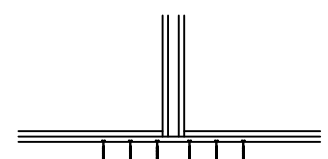
$$\text{TRIBUTARY WIDTH}(W) = \frac{W1 + W2}{2}$$

TABLE NOTES:

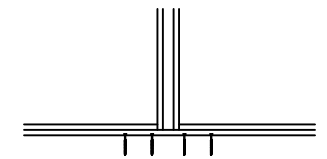
- SEE SHEET 1 FOR INSTRUCTIONS ON USING TABLES.
- LINEAR INTERPOLATION BETWEEN LISTED WIDTHS AND SPANS IS ALLOWED.
- SEE THIS SHEET FOR SPECIFIC MULLION DIMENSIONS.
- SEE SHEET 4 FOR MULLION AND REINFORCEMENT DETAILS.
- SEE SHEET 4 FOR ANCHOR TYPES AND REQUIREMENTS.
- SEE SHEET 4 FOR INSTALLATION SUBSTRATES DETAILS



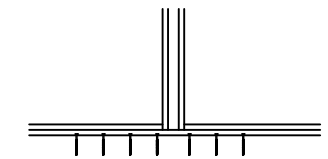
**ANCHOR CONDITION
A1, B1, C1, D1**



**ANCHOR CONDITION
A3, B3, C3, D3**



**ANCHOR CONDITION
A2, B2, C2, D2**



**ANCHOR CONDITION
A4, B4, C4, D4**

Eurocraft
7905 NW 77TH AVE
MEDLEY, FL 33166
PH: (305) 713-1871 FX: (305) 713-1872

TITLE: EQUAL LEG MULLION (WZ3)(IMPACT)
TWO-WAY CONFIGURATION (WITHOUT REINFORCEMENT)

PREPARED BY: BUILDING DROPS, INC.
398 E. DANIA BEACH BLVD., STE. 338
DANIA BEACH, FL 33004
PH: (954) 399-8478
FAX: (954) 744-4738
WEB: www.buildingdrops.com

REMARKS	BY	DATE

THE INSTALLATION DETAILS DESCRIBED HEREIN ARE GENERIC AND MAY NOT REFLECT ACTUAL CONDITIONS FOR A SPECIFIC SITE. IF SITE CONDITIONS CAUSE INSTALLATION TO DEVIATE FROM THE REQUIREMENTS DETAILED HEREIN, A LICENSED ENGINEER OR ARCHITECT SHALL PREPARE SITE SPECIFIC DOCUMENTS FOR USE WITH THIS DOCUMENT.

HERMES J. MORERO
LICENSED PROFESSIONAL ENGINEER
No. 73778
STATE OF FLORIDA
398 E. DANIA BEACH BLVD. # 338
DANIA BEACH, FL 33004
FBPE CERT. OF AUTHORIZATION No. 29578

FL#: FL32630

DATE: 06.11.2020

DWG. BY: YC **CHK. BY:** HFN

SCALE: NTS

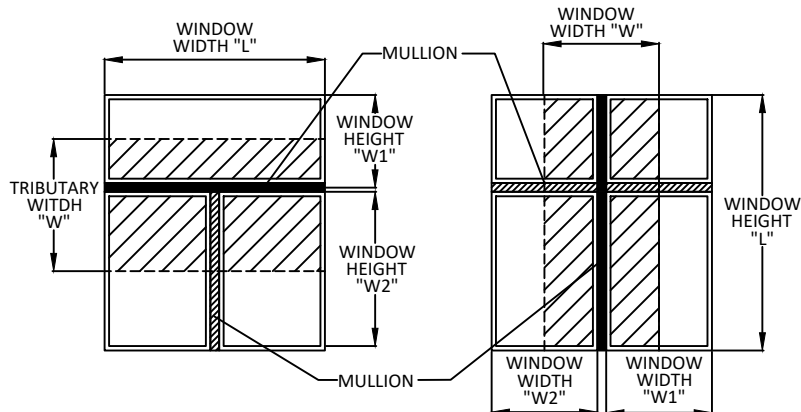
DWG. #: ECI028

SHEET: 7 OF 13

12/17/2020 11:40 AM

**EQUAL LEG MULLION (WITHOUT REINFORCEMENT)
TWO WAY CONFIGURATION**

"W" TRIBUTARY WIDTH (IN)	"L" MULLION LENGTH (IN)	CONDITION 1				CONDITION 2				CONDITION 3				CONDITION 4			
		ANCHOR A	ANCHOR B	ANCHOR C	ANCHOR D	ANCHOR A	ANCHOR B	ANCHOR C	ANCHOR D	ANCHOR A	ANCHOR B	ANCHOR C	ANCHOR D	ANCHOR A	ANCHOR B	ANCHOR C	ANCHOR D
24	108	93	120	87	82	120	120	120	120	120	120	120	120	120	120	120	120
30		75	120	69	66	120	120	120	120	120	120	120	120	120	120	120	120
36		62	110	58	55	110	110	110	110	110	110	110	110	110	110	110	110
42		53	94	49	47	94	94	94	94	94	94	94	94	94	94	94	94
48		47	82	43	41	82	82	82	82	82	82	82	82	82	82	82	82
54		41	73	38	37	73	73	73	73	73	73	73	73	73	73	73	73
60		37	66	35	33	66	66	66	66	66	66	66	66	66	66	66	66
66		34	60	31	30	60	60	60	60	60	60	60	60	60	60	60	60
72		31	55	29	27	55	55	55	55	55	55	55	55	55	55	55	55
78		29	51	27	25	51	51	51	51	51	51	51	51	51	51	51	51
84		27	47	25	23	47	47	47	47	47	47	47	47	47	47	47	47
90		25	44	23	22	44	44	44	44	44	44	44	44	44	44	44	44
96	23	41	22	21	41	41	41	41	41	41	41	41	41	41	41	41	
24	102	99	120	92	87	120	120	120	120	120	120	120	120	120	120	120	120
30		79	120	73	70	120	120	120	120	120	120	120	120	120	120	120	120
36		66	116	61	58	116	116	116	116	116	116	116	116	116	116	116	116
42		56	100	52	50	100	100	100	99	100	100	100	100	100	100	100	100
48		49	87	46	44	87	87	87	87	87	87	87	87	87	87	87	87
54		44	78	41	39	78	78	78	77	78	78	78	78	78	78	78	78
60		39	70	37	35	70	70	70	70	70	70	70	70	70	70	70	70
66		36	64	33	32	64	64	64	63	64	64	64	64	64	64	64	64
72		33	58	31	29	58	58	58	58	58	58	58	58	58	58	58	58
78		30	54	28	27	54	54	54	54	54	54	54	54	54	54	54	54
84		28	50	26	25	50	50	50	50	50	50	50	50	50	50	50	50
90		26	47	24	23	47	47	47	46	47	47	47	47	47	47	47	47
96	25	44	23	22	44	44	44	44	44	44	44	44	44	44	44	44	
24	96	105	120	97	93	120	120	120	120	120	120	120	120	120	120	120	120
30		84	120	78	74	120	120	120	120	120	120	120	120	120	120	120	120
36		70	120	65	62	120	120	120	120	120	120	120	120	120	120	120	120
42		60	106	56	53	106	106	106	106	106	106	106	106	106	106	106	106
48		52	93	49	46	93	93	93	93	93	93	93	93	93	93	93	93
54		47	82	43	41	82	82	82	82	82	82	82	82	82	82	82	82
60		42	74	39	37	74	74	74	74	74	74	74	74	74	74	74	74
66		38	67	35	34	67	67	67	67	67	67	67	67	67	67	67	67
72		35	62	32	31	62	62	62	62	62	62	62	62	62	62	62	62
78		32	57	30	28	57	57	57	57	57	57	57	57	57	57	57	57
84		30	53	28	26	53	53	53	53	53	53	53	53	53	53	53	53
90		28	49	26	25	49	49	49	49	49	49	49	49	49	49	49	49
96	26	46	24	23	46	46	46	46	46	46	46	46	46	46	46	46	
24	90	112	120	104	99	120	120	120	120	120	120	120	120	120	120	120	120
30		89	120	83	79	120	120	120	120	120	120	120	120	120	120	120	120
36		75	120	69	66	120	120	120	120	120	120	120	120	120	120	120	120
42		64	113	59	56	113	113	113	113	113	113	113	113	113	113	113	113
48		56	99	52	49	99	99	99	99	99	99	99	99	99	99	99	99
54		50	88	46	44	88	88	88	88	88	88	88	88	88	88	88	88
60		45	79	42	39	79	79	79	79	79	79	79	79	79	79	79	79
66		41	72	38	36	72	72	72	72	72	72	72	72	72	72	72	72
72		37	66	35	33	66	66	66	66	66	66	66	66	66	66	66	66
78		34	61	32	30	61	61	61	61	61	61	61	61	61	61	61	61
84		32	57	30	28	57	57	57	56	57	57	57	57	57	57	57	57
90		30	53	28	26	53	53	53	53	53	53	53	53	53	53	53	53
96	28	49	26	25	49	49	49	49	49	49	49	49	49	49	49	49	
24	84	120	120	111	106	120	120	120	120	120	120	120	120	120	120	120	120
30		96	120	89	85	120	120	120	120	120	120	120	120	120	120	120	120
36		80	120	74	70	120	120	120	120	120	120	120	120	120	120	120	120
42		68	120	64	60	120	120	120	120	120	120	120	120	120	120	120	120
48		60	106	56	53	106	106	106	106	106	106	106	106	106	106	106	106
54		53	94	49	47	94	94	94	94	94	94	94	94	94	94	94	94
60		48	85	44	42	85	85	85	85	85	85	85	85	85	85	85	85
66		44	77	40	38	77	77	77	77	77	77	77	77	77	77	77	77
72		40	71	37	35	71	71	71	70	71	71	71	71	71	71	71	71
78		37	65	34	33	65	65	65	65	65	65	65	65	65	65	65	65
84		34	61	32	30	61	61	61	60	61	61	61	61	61	61	61	61
90		32	57	30	28	57	57	57	56	57	57	57	57	57	57	57	57
96	30	53	28	26	53	53	53	53	53	53	53	53	53	53	53	53	
24	78	120	120	120	114	120	120	120	120	120	120	120	120	120	120	120	120
30		103	120	96	91	120	120	120	120	120	120	120	120	120	120	120	120
36		86	120	80	76	120	120	120	120	120	120	120	120	120	120	120	120
42		74	120	68	65	120	120	120	120	120	120	120	120	120	120	120	120
48		65	114	60	57	114	114	114	114	114	114	114	114	114	114	114	114
54		57	101	53	51	101	101	101	101	101	101	101	101	101	101	101	101
60		52	91	48	46	91	91	91	91	91	91	91	91	91	91	91	91
66		47	83	44	41	83	83	83	83	83	83	83	83	83	83	83	83
72		43	76	40	38	76	76	76	76	76	76	76	76	76	76	76	76
78		40	70	37	35	70	70	70	70	70	70	70	70	70	70	70	70
84		37	65	34	33	65	65	65	65	65	65	65	65	65	65	65	65
90		34	61	32	30	61	61	61	61	61	61	61	61	61	61	61	61
96	32	57	30	28	57	57	57	57	57	57	57	57	57	57	57	57	

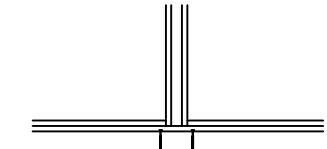


TWO-WAY MULLION DIAGRAMS

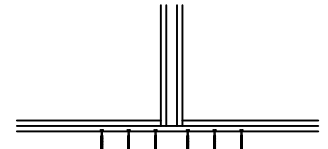
$$\text{TRIBUTARY WIDTH}(W) = \frac{W1 + W2}{2}$$

TABLE NOTES:

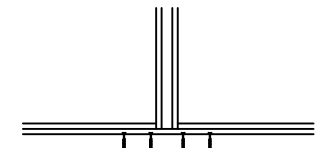
1. SEE SHEET 1 FOR INSTRUCTIONS ON USING TABLES.
2. LINEAR INTERPOLATION BETWEEN LISTED WIDTHS AND SPANS IS ALLOWED.
3. SEE THIS SHEET FOR SPECIFIC MULLION DIMENSIONS.
4. SEE SHEET 4 FOR MULLION AND REINFORCEMENT DETAILS.
5. SEE SHEET 4 FOR ANCHOR TYPES AND REQUIREMENTS.
6. SEE SHEET 4 FOR INSTALLATION SUBSTRATES DETAILS



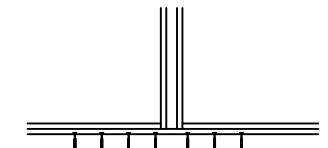
**ANCHOR CONDITION
A1, B1, C1, D1**



**ANCHOR CONDITION
A3, B3, C3, D3**



**ANCHOR CONDITION
A2, B2, C2, D2**



**ANCHOR CONDITION
A4, B4, C4, D4**



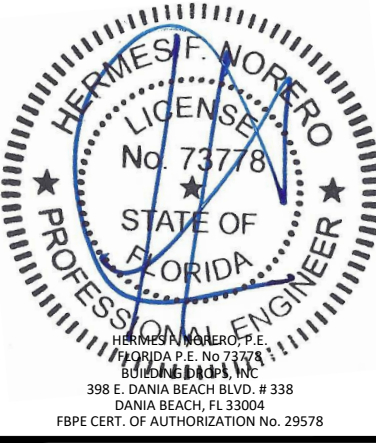
7905 NW 77TH AVE
MEDLEY, FL 33166
PH: (305) 713-1871 FX: (305) 713-1872

TITLE:
EQUAL LEG MULLION
(WZ3)(IMPACT)
TWO-WAY CONFIGURATION
(WITHOUT REINFORCEMENT)

PREPARED BY:
BUILDING DROPS, INC.
398 E. DANIA BEACH BLVD., STE. 338
DANIA BEACH, FL 33004
PH: (954) 399-8478
FAX: (954) 744-4738
WEB: www.buildingdrops.com

REMARKS	BY	DATE

THE INSTALLATION DETAILS DESCRIBED HEREIN ARE GENERIC AND MAY NOT REFLECT ACTUAL CONDITIONS FOR A SPECIFIC SITE. IF SITE CONDITIONS CAUSE INSTALLATION TO DEVIATE FROM THE REQUIREMENTS DETAILED HEREIN, A LICENSED ENGINEER OR ARCHITECT SHALL PREPARE SITE SPECIFIC DOCUMENTS FOR USE WITH THIS DOCUMENT.



FL#: FL32630

DATE: 06.11.2020

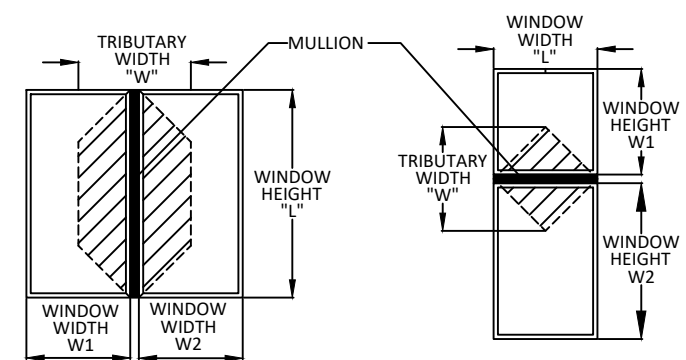
DWG. BY: YC **CHK. BY:** HFN

SCALE: NTS

DWG. #: ECI028

12/17/2020 11:40 AM

EQUAL LEG MULLION (WITH REINFORCEMENT)																		
ONE WAY CONFIGURATION																		
"W" TRIBUTARY WIDTH (IN)	"L" MULLION LENGTH (IN)	CONDITION 1				CONDITION 2				CONDITION 3				CONDITION 4				
		ANCHOR A	ANCHOR B	ANCHOR C	ANCHOR D	ANCHOR A	ANCHOR B	ANCHOR C	ANCHOR D	ANCHOR A	ANCHOR B	ANCHOR C	ANCHOR D	ANCHOR A	ANCHOR B	ANCHOR C	ANCHOR D	
24	144	76	143	71	67	152	170	142	135	170	170	170	170	170	170	170	170	
30		62	117	58	55	125	137	116	110	137	137	137	137	137	137	137	137	
36		53	100	49	47	106	115	99	94	115	115	115	115	115	115	115	115	
42		47	88	43	41	93	100	87	83	100	100	100	100	100	100	100	100	
48		42	79	39	37	84	88	78	74	88	88	88	88	88	88	88	88	
54		38	72	35	34	76	79	71	67	79	79	79	79	79	79	79	79	
60		35	66	33	31	71	72	66	62	72	72	72	72	72	72	72	72	
66		33	62	31	29	66	67	61	58	67	67	67	67	67	67	67	67	
72		31	58	29	27	62	62	58	55	62	62	62	62	62	62	62	62	
78		29	55	27	26	59	59	55	52	59	59	59	59	59	59	59	59	
84		28	53	26	25	55	55	52	50	55	55	55	55	55	55	55	55	
90		27	51	25	24	53	53	50	48	53	53	53	53	53	53	53	53	
96		26	49	24	23	51	51	49	46	51	51	51	51	51	51	51	51	
24		138	80	150	74	70	160	180	148	141	180	180	180	180	180	180	180	180
30			65	123	61	58	131	156	122	116	156	156	156	156	156	156	156	156
36			56	105	52	49	112	131	104	99	131	131	131	131	131	131	131	131
42	49		92	46	43	98	114	91	87	114	114	114	114	114	114	114	114	
48	44		83	41	39	88	101	82	78	101	101	101	101	101	101	101	101	
54	40		75	37	36	81	91	75	71	91	91	91	91	91	91	91	91	
60	37		70	35	33	75	83	69	66	83	83	83	83	83	83	83	83	
66	35		65	32	31	70	76	65	62	76	76	76	76	76	76	76	76	
72	33		62	31	29	66	71	61	58	71	71	71	71	71	71	71	71	
78	31		59	29	28	63	67	58	55	67	67	67	67	67	67	67	67	
84	30		56	28	26	60	64	56	53	64	64	64	64	64	64	64	64	
90	29		54	27	25	58	61	54	51	61	61	61	61	61	61	61	61	
96	28		52	26	25	56	59	52	49	59	59	59	59	59	59	59	59	
24	132		84	157	78	74	168	180	156	148	180	180	180	180	180	180	180	180
30			69	129	64	61	138	179	128	121	179	179	179	179	179	179	179	179
36			59	110	55	52	118	150	109	104	150	150	150	150	150	150	150	150
42		52	97	48	46	104	130	96	91	130	130	130	130	130	130	130	130	
48		47	87	43	41	93	115	87	82	115	115	115	115	115	115	115	115	
54		43	80	40	38	85	104	79	75	104	104	104	104	104	104	104	104	
60		39	74	37	35	79	95	73	70	95	95	95	95	95	95	95	95	
66		37	69	34	33	74	88	69	65	88	88	88	88	88	88	88	88	
72		35	65	32	31	70	82	65	62	82	82	82	82	82	82	82	82	
78		33	62	31	29	67	78	62	59	78	78	78	78	78	78	78	78	
84		32	60	30	28	64	74	59	56	74	74	74	74	74	74	74	74	
90		31	58	29	27	62	71	57	54	71	71	71	71	71	71	71	71	
96		30	56	28	26	60	68	56	53	68	68	68	68	68	68	68	68	
24		126	88	165	82	78	177	180	164	156	180	180	180	180	180	180	180	180
30			73	136	67	64	145	180	135	128	180	180	180	180	180	180	180	180
36			62	116	58	55	124	173	115	110	173	173	173	164	173	173	173	173
42	55		103	51	48	110	150	102	97	150	150	145	150	150	150	150	150	
48	49		92	46	44	99	133	92	87	133	133	133	131	133	133	133	133	
54	45		85	42	40	90	120	84	80	120	120	120	120	120	120	120	120	
60	42		79	39	37	84	110	78	74	110	110	110	110	110	110	110	110	
66	39		74	37	35	79	102	73	69	102	102	102	102	102	102	102	102	
72	37		70	35	33	75	96	69	66	96	96	96	96	96	96	96	96	
78	36		67	33	31	71	91	66	63	91	91	91	91	91	91	91	91	
84	34		64	32	30	68	87	64	60	87	87	87	87	87	87	87	87	
90	33		62	31	29	66	83	62	58	83	83	83	83	83	83	83	83	
96	32		60	30	28	65	80	60	57	80	80	80	80	80	80	80	80	
24	120		93	174	87	82	180	180	173	164	180	180	180	180	180	180	180	180
30			77	144	71	68	153	180	142	135	180	180	180	180	180	180	180	180
36			66	123	61	58	132	180	122	116	180	180	180	174	180	180	180	180
42		58	109	54	51	116	171	108	103	171	171	162	154	171	171	171	171	
48		52	98	49	46	105	155	97	93	155	155	146	139	155	155	155	155	
54		48	90	45	42	96	140	89	85	140	140	134	127	140	140	140	140	
60		45	84	42	39	89	128	83	79	128	128	125	118	128	128	128	128	
66		42	79	39	37	84	119	78	74	119	119	117	111	119	119	119	119	
72		40	75	37	35	80	112	74	70	112	112	111	106	112	112	112	112	
78		38	72	35	34	76	105	71	67	105	105	105	101	105	105	105	105	
84		37	69	34	33	74	101	68	65	101	101	101	98	101	101	101	101	
90		36	67	33	32	72	97	66	63	97	97	97	95	97	97	97	97	
96		35	65	32	31	70	94	65	62	94	94	94	93	94	94	94	94	
24		114	99	180	92	87	180	180	180	174	180	180	180	180	180	180	180	180
30			81	152	76	72	163	180	151	144	180	180	180	180	180	180	180	180
36			70	131	65	62	140	180	130	123	180	180	180	180	180	180	180	180
42	62		116	57	55	124	180	115	109	180	180	172	164	180	180	180	180	
48	56		105	52	49	112	165	104	99	165	165	156	148	165	165	165	165	
54	51		96	48	45	103	152	95	91	152	152	143	136	152	152	152	152	
60	48		90	44	42	96	141	89	85	141	141	133	127	141	141	141	141	
66	45		85	42	40	90	133	84	80	133	133	126	120	133	133	133	133	
72	43		81	40	38	86	125	80	76	125	125	120	114	125	125	125	125	
78	41		77	38	36	83	119	77	73	119	119	115	109	119	119	119	119	
84	40		75	37	35	80	114	74	70	114	114	111	106	114	114	114	114	
90	39		73	36	34	78	110	72	69	110	110	108	103	110	110	110	110	
96	38		71	35	34	76	107	71	67	107	107	106	101	107	107	107	107	

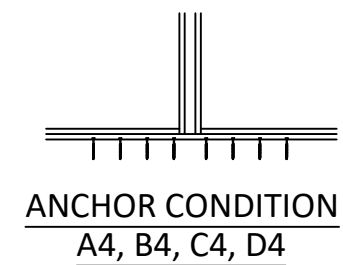
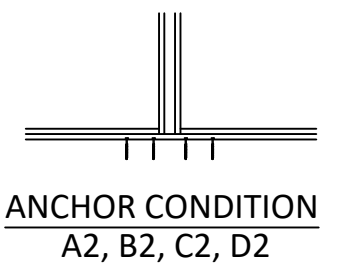
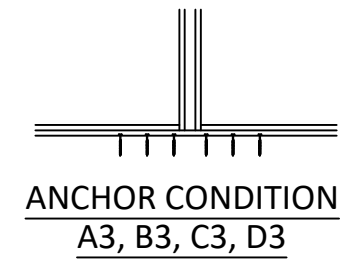
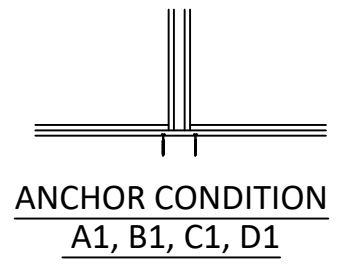


ONE-WAY MULLION DIAGRAMS

$$\text{TRIBUTARY WIDTH}(W) = \frac{W1 + W2}{2}$$

TABLE NOTES:

1. SEE SHEET 1 FOR INSTRUCTIONS ON USING TABLES.
2. LINEAR INTERPOLATION BETWEEN LISTED WIDTHS AND SPANS IS ALLOWED.
3. SEE THIS SHEET FOR SPECIFIC MULLION DIMENSIONS.
4. SEE SHEET 4 FOR MULLION AND REINFORCEMENT DETAILS.
5. SEE SHEET 4 FOR ANCHOR TYPES AND REQUIREMENTS.
6. SEE SHEET 4 FOR INSTALLATION SUBSTRATES DETAILS



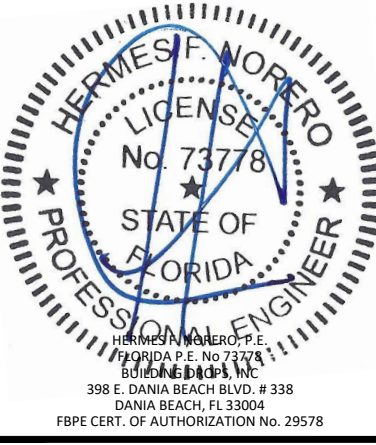
7905 NW 77TH AVE
MEDLEY, FL 33166
PH: (305) 713-1871 FX: (305) 713-1872

TITLE:
EQUAL LEG MULLION (WZ3)(IMPACT)
ONE-WAY CONFIGURATION (REINFORCEMENT)

PREPARED BY:
BUILDING DROPS, INC.
398 E. DANIA BEACH BLVD., STE. 338
DANIA BEACH, FL 33004
PH: (954) 399-8478
FAX: (954) 744-4738
WEB: www.buildingdrops.com

REMARKS	BY	DATE

THE INSTALLATION DETAILS DESCRIBED HEREIN ARE GENERIC AND MAY NOT REFLECT ACTUAL CONDITIONS FOR A SPECIFIC SITE. IF SITE CONDITIONS CAUSE INSTALLATION TO DEVIATE FROM THE REQUIREMENTS DETAILED HEREIN, A LICENSED ENGINEER OR ARCHITECT SHALL PREPARE SITE SPECIFIC DOCUMENTS FOR USE WITH THIS DOCUMENT.



FL#: FL32630

DATE: 06.11.2020

DWG. BY: YC
CHK. BY: HFN

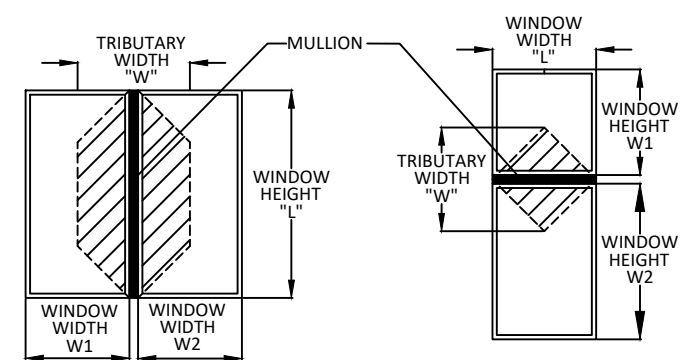
SCALE: NTS

DWG. #: ECI028

SHEET: 9

12/17/2020 11:40 AM

EQUAL LEG MULLION (WITH REINFORCEMENT)																		
ONE WAY CONFIGURATION																		
"W" TRIBUTARY WIDTH (IN)	"L" MULLION LENGTH (IN)	CONDITION 1				CONDITION 2				CONDITION 3				CONDITION 4				
		ANCHOR A	ANCHOR B	ANCHOR C	ANCHOR D	ANCHOR A	ANCHOR B	ANCHOR C	ANCHOR D	ANCHOR A	ANCHOR B	ANCHOR C	ANCHOR D	ANCHOR A	ANCHOR B	ANCHOR C	ANCHOR D	
24	108	105	180	97	93	180	180	180	180	180	180	180	180	180	180	180	180	
30		87	162	80	76	173	180	161	153	180	180	180	180	180	180	180	180	
36		75	140	69	66	149	180	138	132	180	180	180	180	180	180	180	180	
42		66	124	61	58	132	180	123	117	180	180	180	175	180	180	180	175	
48		60	112	56	53	120	177	111	106	177	177	167	159	177	177	167	159	
54		55	103	51	49	110	163	103	97	163	163	154	146	163	163	154	146	
60		52	97	48	46	103	152	96	91	152	152	144	137	152	152	144	137	
66		49	91	45	43	98	144	91	86	144	144	136	129	144	144	136	129	
72		47	87	43	41	93	137	87	82	137	137	130	123	137	137	130	123	
78		45	84	42	40	90	132	83	79	132	132	125	119	132	132	125	119	
84		44	82	40	38	87	129	81	77	129	129	121	115	129	129	121	115	
90		43	80	40	38	85	126	79	75	126	126	119	113	126	126	119	113	
96		42	79	39	37	84	123	78	74	123	123	117	111	123	123	117	111	
24		102	112	180	104	99	180	180	180	180	180	180	180	180	180	180	180	180
30			93	173	86	82	180	180	172	163	180	180	180	180	180	180	180	180
36			80	150	74	70	160	180	148	141	180	180	180	180	180	180	180	180
42	71		133	66	63	142	180	132	125	180	180	180	180	180	180	180	180	
48	65		121	60	57	129	180	120	114	180	180	180	171	180	180	180	180	
54	60		112	55	53	119	176	111	105	176	176	166	158	176	176	176	176	
60	56		105	52	49	112	165	104	99	165	165	156	148	165	165	165	165	
66	53		99	49	47	106	156	98	94	156	156	148	140	156	156	156	156	
72	51		95	47	45	102	150	94	90	150	150	142	135	150	150	150	150	
78	49		92	46	43	98	145	91	87	145	145	137	130	145	145	145	145	
84	48		90	44	42	96	141	89	85	141	141	133	127	141	141	141	141	
90	47		88	44	42	94	139	87	83	139	139	131	125	139	139	139	139	
96	47		87	43	41	93	137	87	82	137	137	130	123	137	137	137	137	
24	96		120	180	111	106	180	180	180	180	180	180	180	180	180	180	180	180
30			99	180	92	88	180	180	180	175	180	180	180	180	180	180	180	180
36			86	161	80	76	172	180	160	152	180	180	180	180	180	180	180	180
42		77	144	71	68	153	180	142	135	180	180	180	180	180	180	180	180	
48		70	131	65	62	140	180	130	123	180	180	180	180	180	180	180	180	
54		65	121	60	57	130	180	120	114	180	180	180	172	180	180	180	180	
60		61	114	57	54	122	180	113	108	180	180	170	161	180	180	180	180	
66		58	109	54	51	116	171	108	103	171	171	162	154	171	171	171	171	
72		56	105	52	49	112	165	104	99	165	165	156	148	165	165	165	165	
78		54	102	50	48	109	160	101	96	160	160	151	144	160	160	160	160	
84		53	100	49	47	106	157	99	94	157	157	148	141	157	157	157	157	
90		53	99	49	46	105	155	98	93	155	155	147	139	155	155	155	155	
96		52	98	49	46	105	155	97	93	155	155	146	139	155	155	155	155	
24		90	129	180	120	114	180	180	180	180	180	180	180	180	180	180	180	180
30			107	180	100	95	180	180	180	180	180	180	180	180	180	180	180	180
36			93	174	87	82	180	180	173	164	180	180	180	180	180	180	180	180
42	83		156	77	74	167	180	155	147	180	180	180	180	180	180	180	180	
48	76		143	71	67	152	180	142	135	180	180	180	180	180	180	180	180	
54	71		133	66	63	142	180	132	125	180	180	180	180	180	180	180	180	
60	67		126	62	59	134	180	125	118	180	180	180	178	180	180	180	180	
66	64		120	60	57	128	180	119	113	180	180	179	170	180	180	180	180	
72	62		116	58	55	124	180	115	110	180	180	173	164	180	180	180	180	
78	61		114	56	54	121	179	113	107	179	179	169	161	179	179	179	179	
84	60		112	56	53	120	177	111	106	177	177	167	159	177	177	177	177	
90	60		112	55	53	119	176	111	105	176	176	166	158	176	176	176	176	
96	52		98	49	46	105	176	97	93	157	176	146	139	176	176	176	176	
24	84		140	180	130	123	180	180	180	180	180	180	180	180	180	180	180	180
30			117	180	108	103	180	180	180	180	180	180	180	180	180	180	180	180
36			102	180	94	90	180	180	180	179	180	180	180	180	180	180	180	180
42		91	171	85	81	180	180	169	161	180	180	180	180	180	180	180	180	
48		84	157	78	74	168	180	156	148	180	180	180	180	180	180	180	180	
54		78	147	73	69	157	180	146	138	180	180	180	180	180	180	180	180	
60		75	140	69	66	149	180	138	132	180	180	180	180	180	180	180	180	
66		72	134	67	63	143	180	133	127	180	180	180	180	180	180	180	180	
72		70	131	65	62	140	180	130	123	180	180	180	180	180	180	180	180	
78		69	129	64	61	138	180	128	121	180	180	180	180	180	180	180	180	
84		68	128	64	60	137	180	127	121	180	180	180	180	180	180	180	180	
90		60	112	55	53	119	180	111	105	179	180	166	158	180	180	180	180	
96		52	98	49	46	105	180	97	93	157	180	146	139	180	180	180	180	
24		78	152	180	142	135	180	180	180	180	180	180	180	180	180	180	180	180
30			128	180	119	113	180	180	180	180	180	180	180	180	180	180	180	180
36			112	180	104	99	180	180	180	180	180	180	180	180	180	180	180	180
42	101		180	94	89	180	180	180	178	180	180	180	180	180	180	180	180	
48	93		174	87	82	180	180	173	164	180	180	180	180	180	180	180	180	
54	88		164	81	77	175	180	163	155	180	180	180	180	180	180	180	180	
60	84		157	78	74	168	180	156	148	180	180	180	180	180	180	180	180	
66	81		152	76	72	163	180	151	144	180	180	180	180	180	180	180	180	
72	80		150	74	70	160	180	148	141	180	180	180	180	180	180	180	180	
78	79		149	74	70	159	180	147	140	180	180	180	180	180	180	180	180	
84	68		128	64	60	137	180	127	121	180	180	180	180	180	180	180	180	
90	60		112	55	53	119	180	111	105	179	180	166	158	180	180	180	180	
96	52		98	49	46	105	180	97	93	157	180	146	139	180	180	180	180	

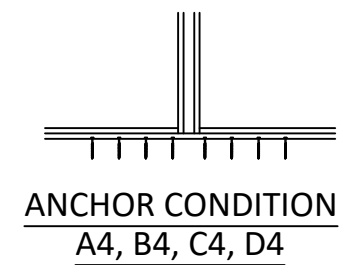
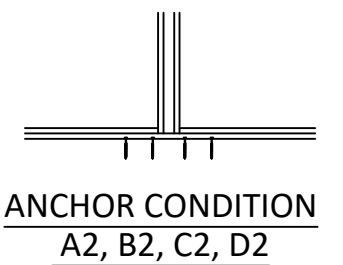
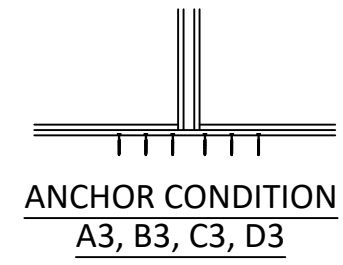
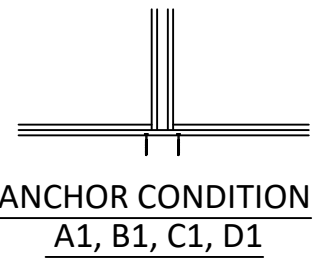


ONE-WAY MULLION DIAGRAMS

$$\text{TRIBUTARY WIDTH}(W) = \frac{W1 + W2}{2}$$

TABLE NOTES:

1. SEE SHEET 1 FOR INSTRUCTIONS ON USING TABLES.
2. LINEAR INTERPOLATION BETWEEN LISTED WIDTHS AND SPANS IS ALLOWED.
3. SEE THIS SHEET FOR SPECIFIC MULLION DIMENSIONS.
4. SEE SHEET 4 FOR MULLION AND REINFORCEMENT DETAILS.
5. SEE SHEET 4 FOR ANCHOR TYPES AND REQUIREMENTS.
6. SEE SHEET 4 FOR INSTALLATION SUBSTRATES DETAILS



7905 NW 77TH AVE
MEDLEY, FL 33166
PH: (305) 713-1871 FX: (305) 713-1872

TITLE: EQUAL LEG MULLION (WZ3)(IMPACT)
ONE-WAY CONFIGURATION (REINFORCEMENT)

PREPARED BY: BUILDING DROPS, INC.
398 E. DANIA BEACH BLVD., STE. 338
DANIA BEACH, FL 33004
PH: (954) 399-8478
FAX: (954) 744-4738
WEB: www.buildingdrops.com

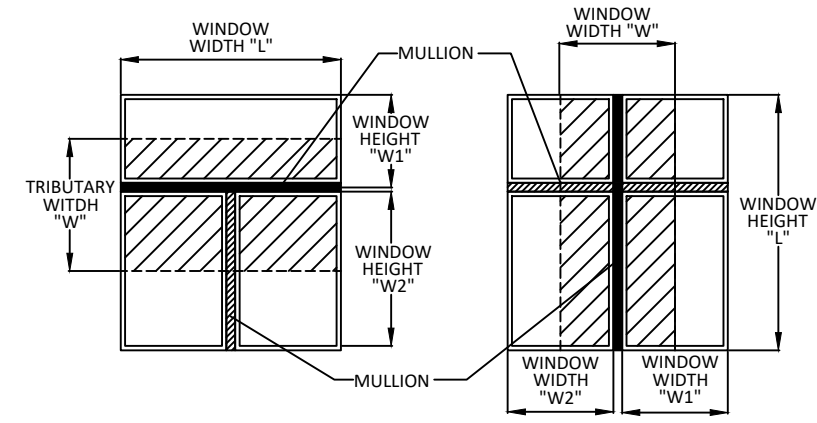
REMARKS	BY	DATE

THE INSTALLATION DETAILS DESCRIBED HEREIN ARE GENERIC AND MAY NOT REFLECT ACTUAL CONDITIONS FOR A SPECIFIC SITE. IF SITE CONDITIONS CAUSE INSTALLATION TO DEVIATE FROM THE REQUIREMENTS DETAILED HEREIN, A LICENSED ENGINE

12/17/2020 11:40 AM
s:\projects\eurocraft industries inc\c-20-0916-fbc code change (ver. 7)\revision due to alum. anchors\132630.dwg\ec1028-wz3.dwg

**EQUAL LEG MULLION (WITH REINFORCEMENT)
TWO-WAY CONFIGURATION**

"W" TRIBUTARY WIDTH (IN)	"L" MULLION LENGTH (IN)	CONDITION 1				CONDITION 2				CONDITION 3				CONDITION 4			
		ANCHOR A	ANCHOR B	ANCHOR C	ANCHOR D	ANCHOR A	ANCHOR B	ANCHOR C	ANCHOR D	ANCHOR A	ANCHOR B	ANCHOR C	ANCHOR D	ANCHOR A	ANCHOR B	ANCHOR C	ANCHOR D
24	144	70	131	65	62	140	156	130	123	156	156	156	156	156	156	156	156
30		56	105	52	49	112	123	104	99	123	123	123	123	123	123	123	123
36		47	87	43	41	93	101	87	82	101	101	101	101	101	101	101	101
42		40	75	37	35	80	85	74	70	85	85	85	85	85	85	85	85
48		35	65	32	31	70	73	65	62	73	73	73	73	73	73	73	73
54		31	58	29	27	62	64	58	55	64	64	64	64	64	64	64	64
60		28	52	26	25	56	57	52	49	57	57	57	57	57	57	57	57
66		25	48	24	22	51	51	47	45	51	51	51	51	51	51	51	51
72		23	44	22	21	47	47	43	41	47	47	47	47	47	47	47	47
78		22	40	20	19	43	43	40	38	43	43	43	43	43	43	43	43
84		20	37	19	18	39	39	37	35	39	39	39	39	39	39	39	39
90		19	35	17	16	36	36	35	33	36	36	36	36	36	36	36	36
96	17	33	16	15	34	34	32	31	34	34	34	34	34	34	34	34	
24	138	73	137	68	64	146	177	135	129	177	177	177	177	177	177	177	177
30		58	109	54	51	117	139	108	103	139	139	139	139	139	139	139	139
36		49	91	45	43	97	114	90	86	114	114	114	114	114	114	114	114
42		42	78	39	37	83	96	77	74	96	96	96	96	96	96	96	96
48		36	68	34	32	73	83	68	64	83	83	83	83	83	83	83	83
54		32	61	30	29	65	73	60	57	73	73	73	73	73	73	73	73
60		29	55	27	26	58	65	54	51	65	65	65	65	65	65	65	65
66		27	50	25	23	53	58	49	47	58	58	58	58	58	58	58	58
72		24	46	23	21	49	53	45	43	53	53	53	53	53	53	53	53
78		22	42	21	20	45	48	42	40	48	48	48	48	48	48	48	48
84		21	39	19	18	42	44	39	37	44	44	44	44	44	44	44	44
90		19	36	18	17	39	41	36	34	41	41	41	41	41	41	41	41
96	18	34	17	16	36	38	34	32	38	38	38	38	38	38	38	38	
24	132	76	143	71	67	152	180	142	135	180	180	180	180	180	180	180	180
30		61	114	57	54	122	158	113	108	158	158	158	158	158	158	158	158
36		51	95	47	45	102	130	94	90	130	130	130	130	130	130	130	130
42		44	82	40	38	87	110	81	77	110	110	110	110	110	110	110	110
48		38	71	35	34	76	94	71	67	94	94	94	94	94	94	94	94
54		34	63	31	30	68	83	63	60	83	83	83	83	83	83	83	83
60		30	57	28	27	61	74	57	54	74	74	74	74	74	74	74	74
66		28	52	26	24	55	66	51	49	66	66	66	66	66	66	66	66
72		25	48	24	22	51	60	47	45	60	60	60	60	60	60	60	60
78		23	44	22	21	47	55	44	41	55	55	55	55	55	55	55	55
84		22	41	20	19	44	50	40	38	50	50	50	50	50	50	50	50
90		20	38	19	18	41	47	38	36	47	47	47	47	47	47	47	47
96	19	36	18	17	38	44	35	34	44	44	44	44	44	44	44	44	
24	126	80	150	74	70	160	180	148	141	180	180	180	180	180	180	180	180
30		64	120	59	56	128	180	119	113	180	180	178	169	180	180	180	180
36		53	100	49	47	106	149	99	94	149	149	148	141	149	149	149	149
42		46	85	42	40	91	125	85	81	125	125	125	121	125	125	125	125
48		40	75	37	35	80	108	74	70	108	108	108	106	108	108	108	108
54		35	66	33	31	71	95	66	63	95	95	95	94	95	95	95	95
60		32	60	30	28	64	84	59	56	84	84	84	84	84	84	84	84
66		29	54	27	26	58	76	54	51	76	76	76	76	76	76	76	76
72		27	50	25	23	53	69	49	47	69	69	69	69	69	69	69	69
78		25	46	23	22	49	63	46	43	63	63	63	63	63	63	63	63
84		23	43	21	20	46	58	42	40	58	58	58	58	58	58	58	58
90		21	40	20	19	43	53	40	38	53	53	53	53	53	53	53	53
96	20	37	19	18	40	50	37	35	50	50	50	50	50	50	50	50	
24	120	84	157	78	74	168	180	156	148	180	180	180	180	180	180	180	180
30		67	126	62	59	134	180	125	118	180	180	180	178	180	180	180	180
36		56	105	52	49	112	165	104	99	165	165	156	148	165	165	165	165
42		48	90	44	42	96	141	89	85	141	141	133	127	141	141	141	141
48		42	79	39	37	84	124	78	74	124	124	117	111	124	124	124	124
54		37	70	35	33	75	109	69	66	109	109	104	99	109	109	109	109
60		34	63	31	30	67	96	62	59	96	96	93	89	96	96	96	96
66		30	57	28	27	61	86	57	54	86	86	85	81	86	86	86	86
72		28	52	26	25	56	78	52	49	78	78	78	74	78	78	78	78
78		26	48	24	23	52	71	48	46	71	71	71	68	71	71	71	71
84		24	45	22	21	48	65	44	42	65	65	65	63	65	65	65	65
90		22	42	21	20	45	60	42	39	60	60	60	59	60	60	60	60
96	21	39	19	19	42	56	39	37	56	56	56	56	56	56	56	56	
24	114	88	165	82	78	177	180	164	156	180	180	180	180	180	180	180	180
30		71	132	66	62	141	180	131	125	180	180	180	180	180	180	180	180
36		59	110	55	52	118	174	109	104	174	174	164	156	174	174	174	174
42		50	94	47	45	101	149	94	89	149	149	140	134	149	149	149	149
48		44	83	41	39	88	130	82	78	130	130	123	117	130	130	130	130
54		39	73	36	35	78	116	73	69	116	116	109	104	116	116	116	116
60		35	66	33	31	71	104	66	62	104	104	98	93	104	104	104	104
66		32	60	30	28	64	95	60	57	95	95	89	85	95	95	95	95
72		29	55	27	26	59	86	55	52	86	86	82	78	86	86	86	86
78		27	51	25	24	54	78	50	48	78	78	76	72	78	78	78	78
84		25	47	23	22	50	72	47	45	72	72	70	67	72	72	72	72
90		24	44	22	21	47	66	44	42	66	66	66	62	66	66	66	66
96	22	41	20	19	44	62	41	39	62	62	61	58	62	62	62	62	

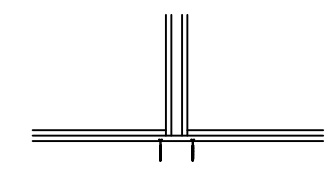


TWO-WAY MULLION DIAGRAMS

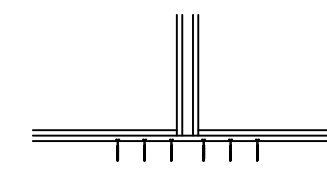
$$\text{TRIBUTARY WIDTH}(W) = \frac{W1 + W2}{2}$$

TABLE NOTES:

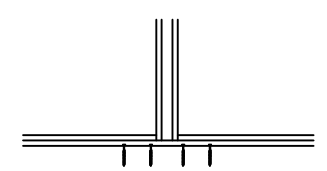
1. SEE SHEET 1 FOR INSTRUCTIONS ON USING TABLES.
2. LINEAR INTERPOLATION BETWEEN LISTED WIDTHS AND SPANS IS ALLOWED.
3. SEE THIS SHEET FOR SPECIFIC MULLION DIMENSIONS.
4. SEE SHEET 4 FOR MULLION AND REINFORCEMENT DETAILS.
5. SEE SHEET 4 FOR ANCHOR TYPES AND REQUIREMENTS.
6. SEE SHEET 4 FOR INSTALLATION SUBSTRATES DETAILS



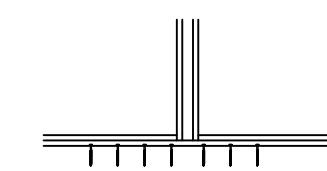
**ANCHOR CONDITION
A1, B1, C1, D1**



**ANCHOR CONDITION
A3, B3, C3, D3**



**ANCHOR CONDITION
A2, B2, C2, D2**



**ANCHOR CONDITION
A4, B4, C4, D4**

Eurocraft
7905 NW 77TH AVE
MEDLEY, FL 33166
PH: (305) 713-1871 FX: (305) 713-1872

TITLE:
EQUAL LEG MULLION (WZ3)(IMPACT)
TWO-WAY CONFIGURATION (REINFORCEMENT)

PREPARED BY:
BUILDING DROPS, INC.
398 E. DANIA BEACH BLVD., STE. 338
DANIA BEACH, FL 33004
PH: (954) 399-8478
FAX: (954) 744-4738
WEB: www.buildingdrops.com

REMARKS	BY	DATE

THE INSTALLATION DETAILS DESCRIBED HEREIN ARE GENERIC AND MAY NOT REFLECT ACTUAL CONDITIONS FOR A SPECIFIC SITE. IF SITE CONDITIONS CAUSE INSTALLATION TO DEVIATE FROM THE REQUIREMENTS DETAILED HEREIN, A LICENSED ENGINEER OR ARCHITECT SHALL PREPARE SITE SPECIFIC DOCUMENTS FOR USE WITH THIS DOCUMENT.

HERMES J. MORERO
LICENSED PROFESSIONAL ENGINEER
No. 73778
STATE OF FLORIDA
HERMES J. MORERO, P.E.
FLORIDA P.E. No. 73778
BUILDING DROPS, INC.
398 E. DANIA BEACH BLVD. # 338
DANIA BEACH, FL 33004
FBPE CERT. OF AUTHORIZATION No. 29578

FL#: FL32630

DATE: 06.11.2020

DWG. BY: YC **CHK. BY:** HFN

SCALE: NTS

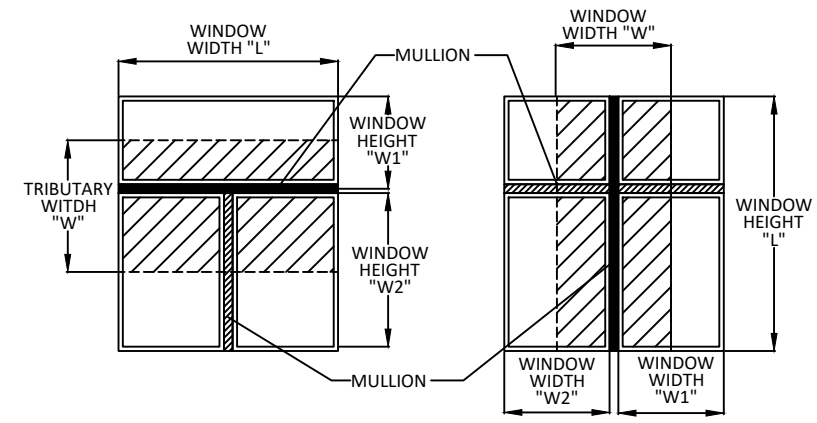
DWG. #: ECI028

SHEET: 11 OF 13

12/17/2020 11:40 AM
s:\projects\eurocraft_industries inc\c-20-0916-fbc code change (ver. 7)\revision due to alum. anchors\132630.dwg\ec1028-wz3.dwg

**EQUAL LEG MULLION (WITH REINFORCEMENT)
TWO-WAY CONFIGURATION**

"W" TRIBUTARY WIDTH (IN)	"L" MULLION LENGTH (IN)	CONDITION 1				CONDITION 2				CONDITION 3				CONDITION 4			
		ANCHOR A	ANCHOR B	ANCHOR C	ANCHOR D	ANCHOR A	ANCHOR B	ANCHOR C	ANCHOR D	ANCHOR A	ANCHOR B	ANCHOR C	ANCHOR D	ANCHOR A	ANCHOR B	ANCHOR C	ANCHOR D
24	108	93	174	87	82	180	180	173	164	180	180	180	180	180	180	180	180
30		75	140	69	66	149	180	138	132	180	180	180	180	180	180	180	180
36		62	116	58	55	124	180	115	110	180	180	173	164	180	180	173	164
42		53	100	49	47	106	157	99	94	157	157	148	141	157	157	148	141
48		47	87	43	41	93	137	87	82	137	137	130	123	137	137	130	123
54		41	78	38	37	83	122	77	73	122	122	115	110	122	122	115	110
60		37	70	35	33	75	110	69	66	110	110	104	99	110	110	104	99
66		34	63	31	30	68	100	63	60	100	100	94	90	100	100	94	90
72		31	58	29	27	62	92	58	55	92	92	87	82	92	92	87	82
78		29	54	27	25	57	85	53	51	85	85	80	76	85	85	80	76
84		27	50	25	23	53	79	49	47	79	79	74	70	79	79	74	70
90		25	47	23	22	50	73	46	44	73	73	69	66	73	73	69	66
96	23	44	22	21	47	69	43	41	69	69	65	62	69	69	65	62	
24	102	99	180	92	87	180	180	180	174	180	180	180	180	180	180	180	180
30		79	148	73	70	158	180	147	139	180	180	180	180	180	180	180	180
36		66	123	61	58	132	180	122	116	180	180	180	174	180	180	180	180
42		56	106	52	50	113	166	105	99	166	166	157	149	166	166	166	166
48		49	92	46	44	99	146	92	87	146	146	137	131	146	146	146	146
54		44	82	41	39	88	129	81	77	129	129	122	116	129	129	129	129
60		39	74	37	35	79	116	73	70	116	116	110	104	116	116	116	116
66		36	67	33	32	72	106	67	63	106	106	100	95	106	106	106	106
72		33	62	31	29	66	97	61	58	97	97	92	87	97	97	97	97
78		30	57	28	27	61	90	56	54	90	90	85	80	90	90	90	90
84		28	53	26	25	56	83	52	50	83	83	79	75	83	83	83	83
90		26	49	24	23	53	78	49	46	78	78	73	70	78	78	78	78
96	25	46	23	22	49	73	46	44	73	73	69	65	73	73	73	73	
24	96	105	180	97	93	180	180	180	180	180	180	180	180	180	180	180	180
30		84	157	78	74	168	180	156	148	180	180	180	180	180	180	180	180
36		70	131	65	62	140	180	130	123	180	180	180	180	180	180	180	180
42		60	112	56	53	120	177	111	106	177	177	167	159	177	177	177	177
48		52	98	49	46	105	155	97	93	155	155	146	139	155	155	155	155
54		47	87	43	41	93	137	87	82	137	137	130	123	137	137	137	137
60		42	79	39	37	84	124	78	74	124	124	117	111	124	124	124	124
66		38	71	35	34	76	112	71	67	112	112	106	101	112	112	112	112
72		35	65	32	31	70	103	65	62	103	103	97	93	103	103	103	103
78		32	60	30	28	65	95	60	57	95	95	90	85	95	95	95	95
84		30	56	28	26	60	88	56	53	88	88	83	79	88	88	88	88
90		28	52	26	25	56	82	52	49	82	82	78	74	82	82	82	82
96	26	49	24	23	52	77	49	46	77	77	73	69	77	77	77	77	
24	90	112	180	104	99	180	180	180	180	180	180	180	180	180	180	180	180
30		89	167	83	79	179	180	166	158	180	180	180	180	180	180	180	180
36		75	140	69	66	149	180	138	132	180	180	180	180	180	180	180	180
42		64	120	59	56	128	180	119	113	180	180	178	169	180	180	180	180
48		56	105	52	49	112	165	104	99	165	165	156	148	165	165	165	165
54		50	93	46	44	99	147	92	88	147	147	138	132	147	147	147	147
60		45	84	42	39	89	132	83	79	132	132	125	118	132	132	132	132
66		41	76	38	36	81	120	76	72	120	120	113	108	120	120	120	120
72		37	70	35	33	75	110	69	66	110	110	104	99	110	110	110	110
78		34	64	32	30	69	101	64	61	101	101	96	91	101	101	101	101
84		32	60	30	28	64	94	59	56	94	94	89	85	94	94	94	94
90		30	56	28	26	60	88	55	53	88	88	83	79	88	88	88	88
96	28	52	26	25	56	82	52	49	82	82	78	74	82	82	82	82	
24	84	120	180	111	106	180	180	180	180	180	180	180	180	180	180	180	180
30		96	179	89	85	180	180	178	169	180	180	180	180	180	180	180	180
36		80	150	74	70	160	180	148	141	180	180	180	180	180	180	180	180
42		68	128	64	60	137	180	127	121	180	180	180	180	180	180	180	180
48		60	112	56	53	120	177	111	106	177	177	167	159	177	177	177	177
54		53	100	49	47	106	157	99	94	157	157	148	141	157	157	157	157
60		48	90	44	42	96	141	89	85	141	141	133	127	141	141	141	141
66		44	82	40	38	87	129	81	77	129	129	121	115	129	129	129	129
72		40	75	37	35	80	118	74	70	118	118	111	106	118	118	118	118
78		37	69	34	33	74	109	68	65	109	109	103	98	109	109	109	109
84		34	64	32	30	68	101	64	60	101	101	95	91	101	101	101	101
90		32	60	30	28	64	94	59	56	94	94	89	85	94	94	94	94
96	30	56	28	26	60	88	56	53	88	88	83	79	88	88	88	88	
24	78	129	180	120	114	180	180	180	180	180	180	180	180	180	180	180	180
30		86	161	80	76	172	180	160	152	180	180	180	180	180	180	180	180
36		74	138	68	65	147	180	137	130	180	180	180	180	180	180	180	180
42		65	121	60	57	129	180	120	114	180	180	171	160	180	180	180	180
48		57	107	53	51	115	169	106	101	169	169	160	152	169	169	169	169
54		52	97	48	46	103	152	96	91	152	152	144	137	152	152	152	152
60		47	88	44	41	94	138	87	83	138	138	131	124	138	138	138	138
66		43	81	40	38	86	127	80	76	127	127	120	114	127	127	127	127
72		40	74	37	35	79	117	74	70	117	117	111	105	117	117	117	117
78		37	69	34	33	74	109	68	65	109	109	103	98	109	109	109	109
84		34	64	32	30	69	101	64	61	101	101	96	91	101	101	101	101
90		32	60	30	28	65	95	60	57	95	95	90	85	95	95	95	95

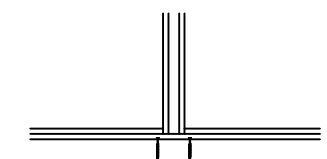


TWO-WAY MULLION DIAGRAMS

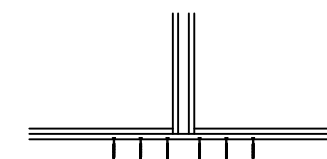
$$\text{TRIBUTARY WIDTH}(W) = \frac{W1 + W2}{2}$$

TABLE NOTES:

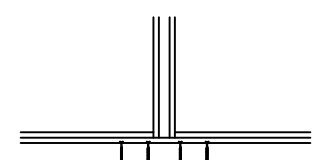
1. SEE SHEET 1 FOR INSTRUCTIONS ON USING TABLES.
2. LINEAR INTERPOLATION BETWEEN LISTED WIDTHS AND SPANS IS ALLOWED.
3. SEE THIS SHEET FOR SPECIFIC MULLION DIMENSIONS.
4. SEE SHEET 4 FOR MULLION AND REINFORCEMENT DETAILS.
5. SEE SHEET 4 FOR ANCHOR TYPES AND REQUIREMENTS.
6. SEE SHEET 4 FOR INSTALLATION SUBSTRATES DETAILS



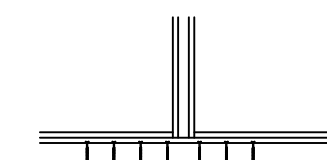
**ANCHOR CONDITION
A1, B1, C1, D1**



**ANCHOR CONDITION
A3, B3, C3, D3**



**ANCHOR CONDITION
A2, B2, C2, D2**



**ANCHOR CONDITION
A4, B4, C4, D4**

Eurocraft

7905 NW 77TH AVE
MEDLEY, FL 33166
PH: (305) 713-1871 FX: (305) 713-1872

TITLE:
EQUAL LEG MULLION (WZ3)(IMPACT)
TWO-WAY CONFIGURATION (REINFORCEMENT)

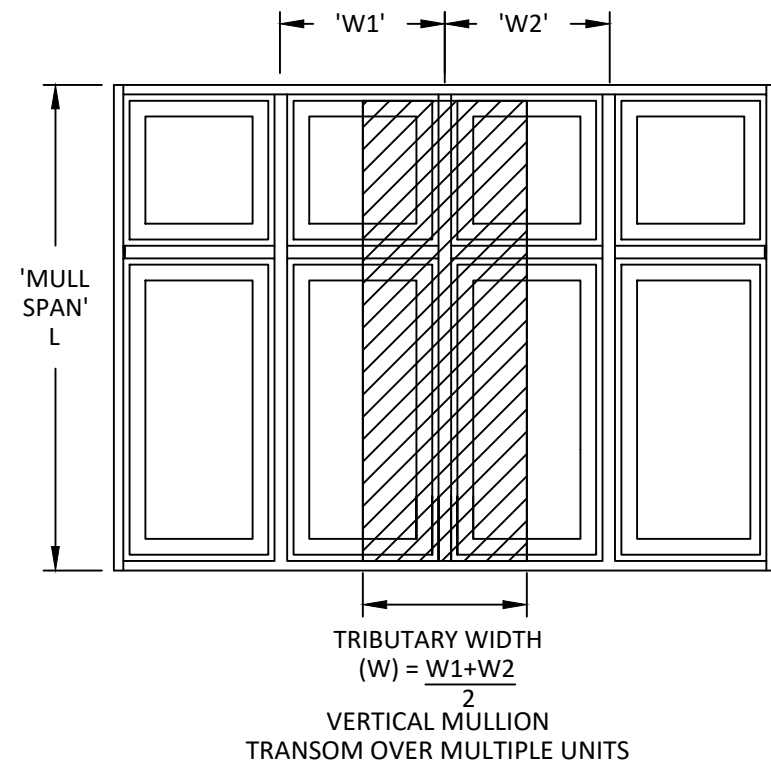
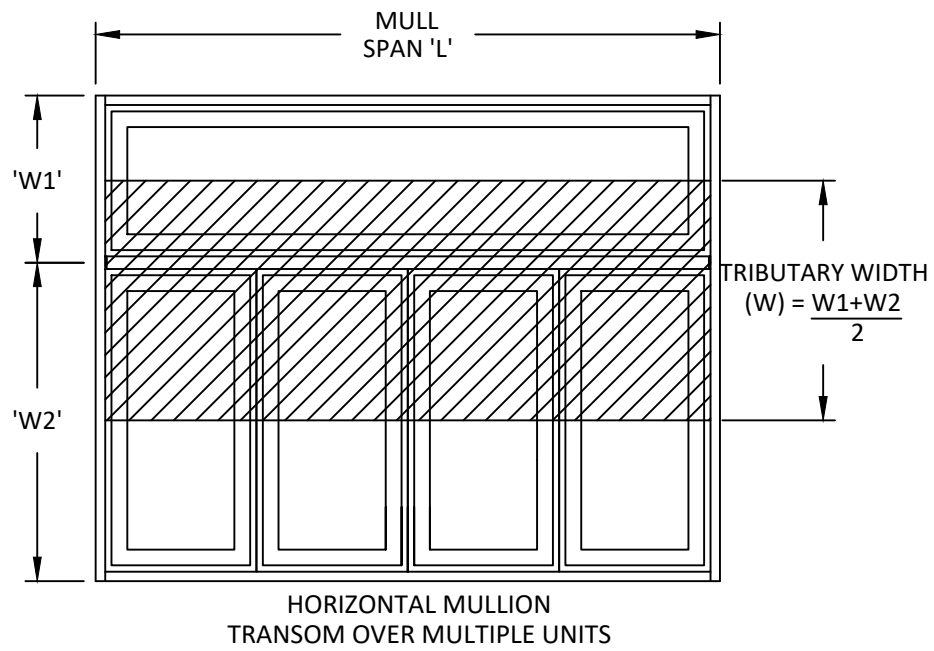
PREPARED BY:
BUILDING DROPS, INC.
398 E. DANIA BEACH BLVD., STE. 338
DANIA BEACH, FL 33004
PH: (954) 399-8478
FAX: (954) 744-4738
WEB: www.buildingdrops.com

REMARKS	BY	DATE

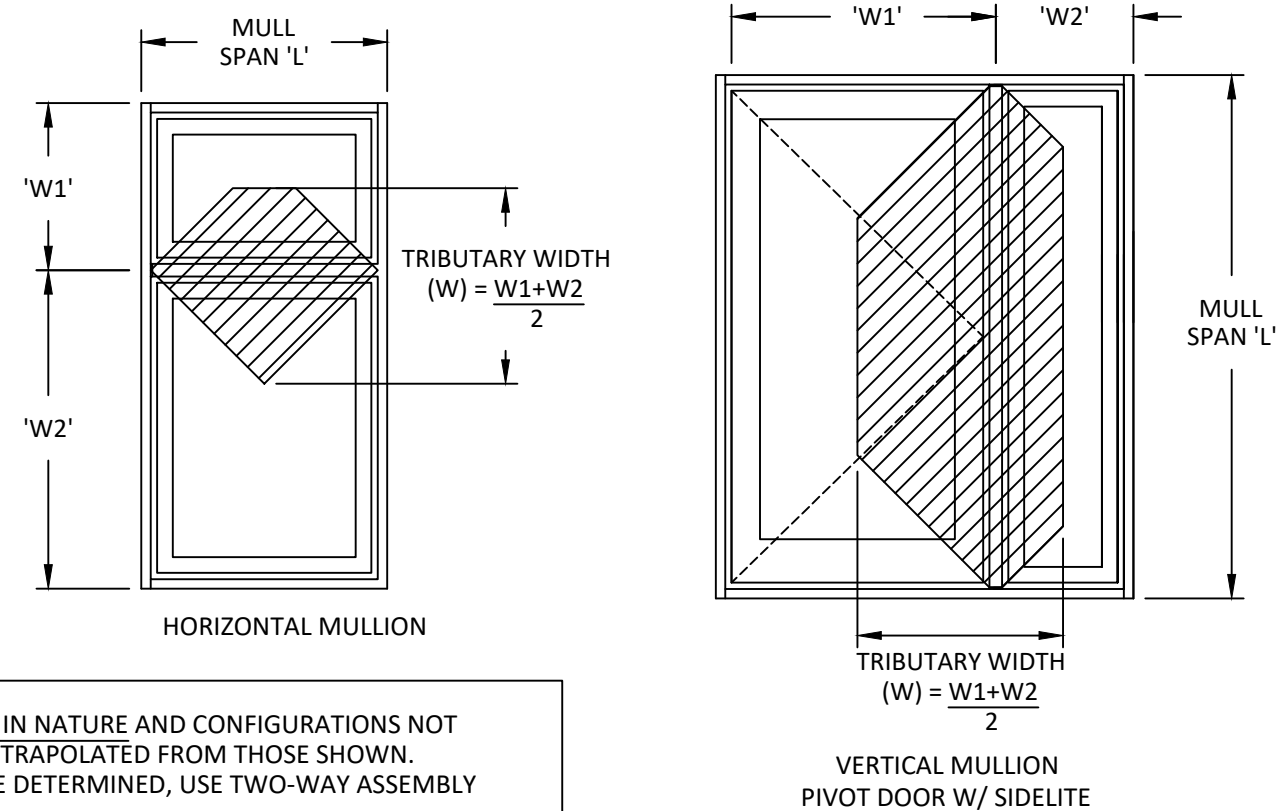
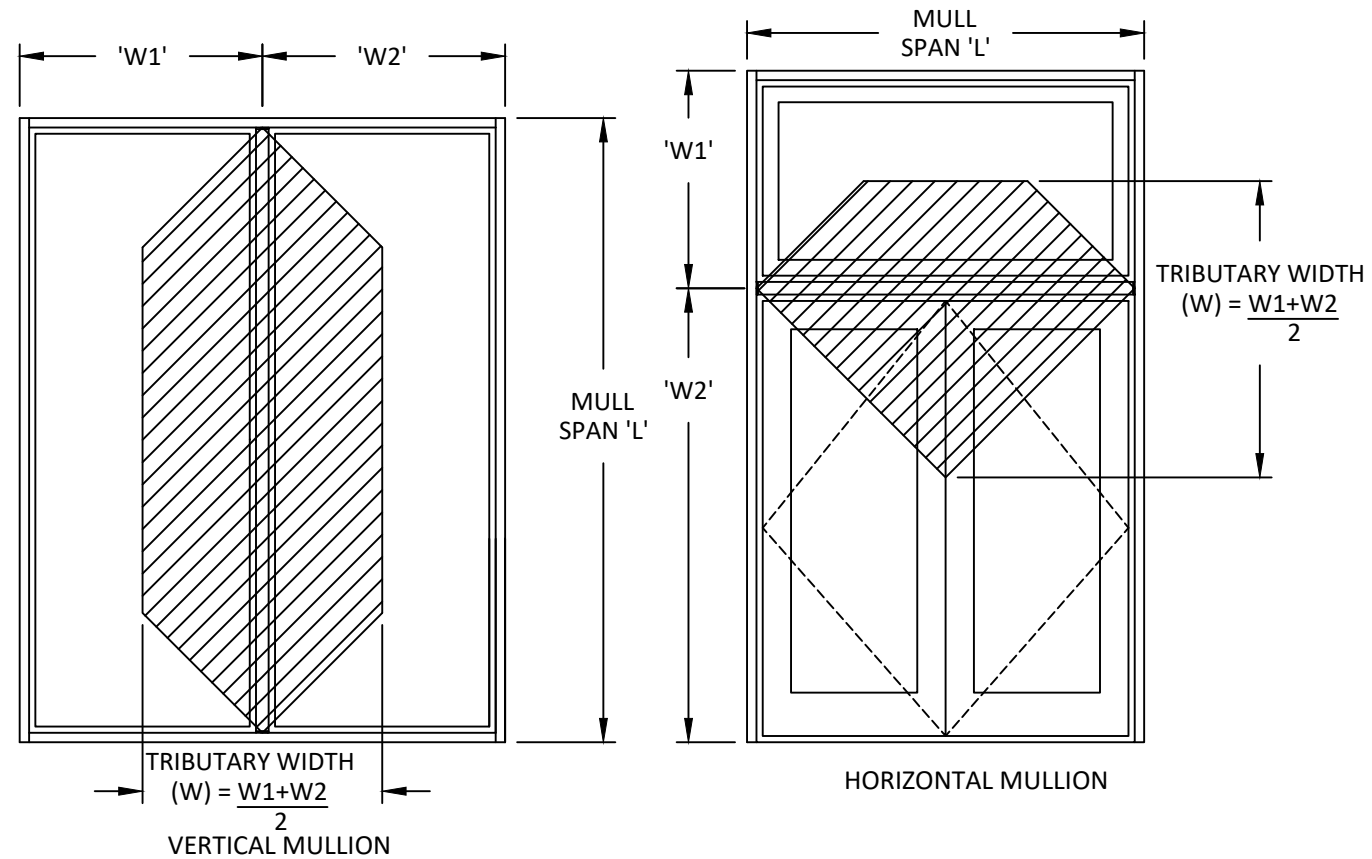
THE INSTALLATION DETAILS DESCRIBED HEREIN ARE GENERIC AND MAY NOT REFLECT ACTUAL CONDITIONS FOR A SPECIFIC SITE. IF SITE CONDITIONS CAUSE INSTALLATION TO DEVIATE FROM THE REQUIREMENTS DETAILED HEREIN, A LICENSED ENGINEER OR ARCHITECT SHALL PREPARE SITE SPECIFIC DOCUMENTS FOR USE WITH THIS DOCUMENT.

HERMES N. MORERO, P.E.
FLORIDA P.E. No. 73778
BUILDING DROPS, INC.
398 E. DANIA BEACH BLVD. # 338
DANIA BEACH, FL 33004
FBPE CERT. OF AUTHORIZATION No. 2

EXAMPLES OF TWO-WAY MULLION ASSEMBLIES



EXAMPLES OF ONE-WAY MULLION ASSEMBLIES



- NOTES:**
1. DRAWINGS ARE DIAGRAMMATIC IN NATURE AND CONFIGURATIONS NOT SPECIFICALLY SHOWN MAY BE EXTRAPOLATED FROM THOSE SHOWN.
 2. IF THE LOADING TYPE CANNOT BE DETERMINED, USE TWO-WAY ASSEMBLY CONFIGURATION VALUES.
 3. FENESTRATION PRODUCTS SHALL BE ANCHORED AS PER SEPARATE APPROVAL.



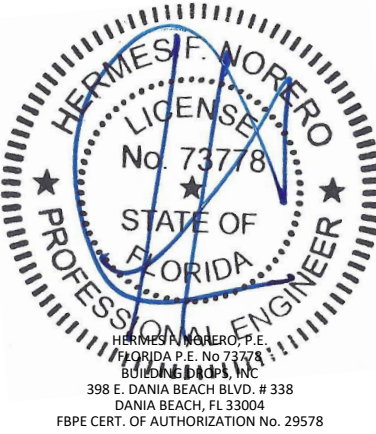
7905 NW 77TH AVE
MEDLEY, FL 33166
PH: (305) 713-1871 FX: (305) 713-1872

TITLE: EQUAL LEG MULLION (WZ3)(IMPACT)
MULLION ASSEMBLIES

PREPARED BY: BUILDING DROPS, INC.
398 E. DANIA BEACH BLVD., STE. 338
DANIA BEACH, FL 33004
PH: (954) 399-8478
FAX: (954) 744-4738
WEB: www.buildingdrops.com

REMARKS	BY	DATE

THE INSTALLATION DETAILS DESCRIBED HEREIN ARE GENERIC AND MAY NOT REFLECT ACTUAL CONDITIONS FOR A SPECIFIC SITE. IF SITE CONDITIONS CAUSE INSTALLATION TO DEVIATE FROM THE REQUIREMENTS DETAILED HEREIN, A LICENSED ENGINEER OR ARCHITECT SHALL PREPARE SITE SPECIFIC DOCUMENTS FOR USE WITH THIS DOCUMENT.



FL#: **FL32630**

DATE: **06.11.2020**

DWG. BY: **YC** CHK. BY: **HFN**

SCALE: **NTS**

DWG. #: **ECI028**

SHEET: